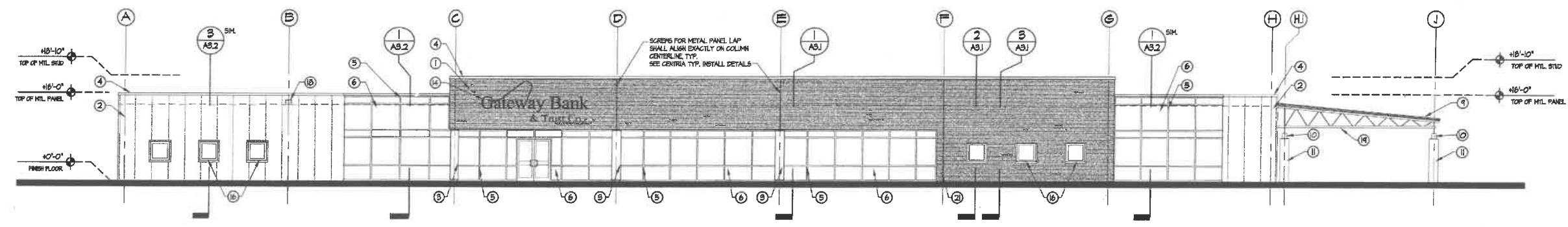
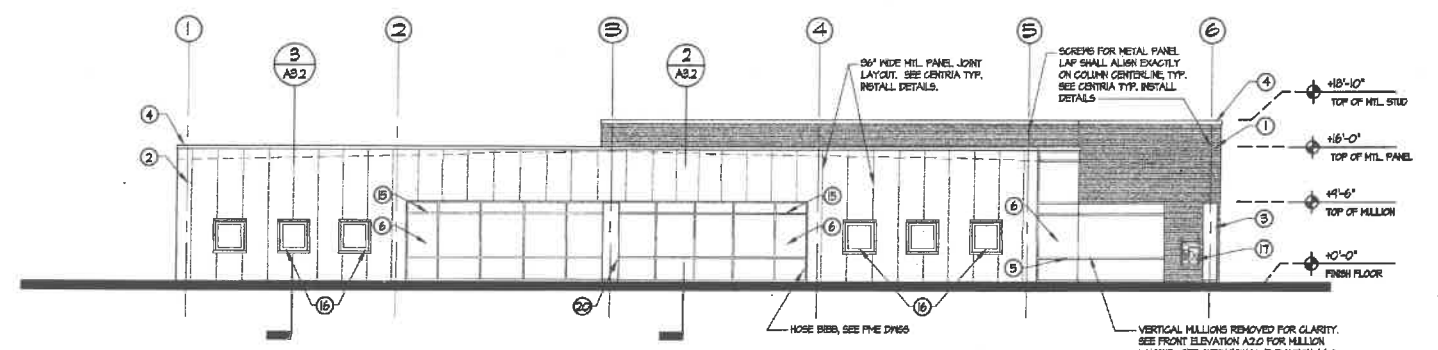


400 WORLD TRADE CENTER
 NORFOLK, VIRGINIA 23502
 757 623 6966 FAX 757 623 6448



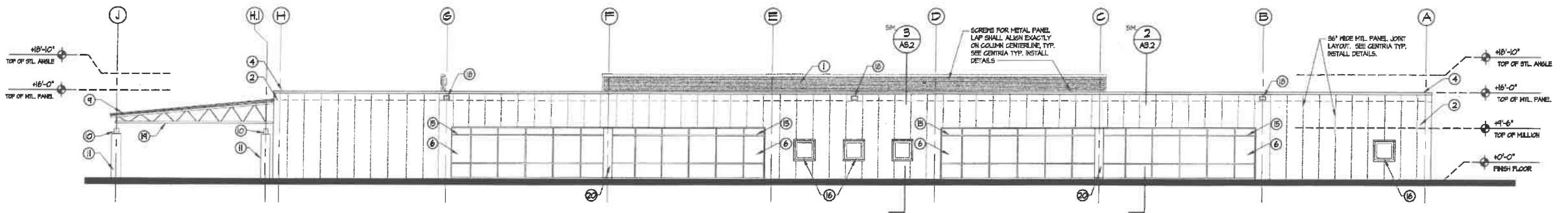
A FRONT ELEVATION
 1/8" = 1'-0"

0451.01-EL



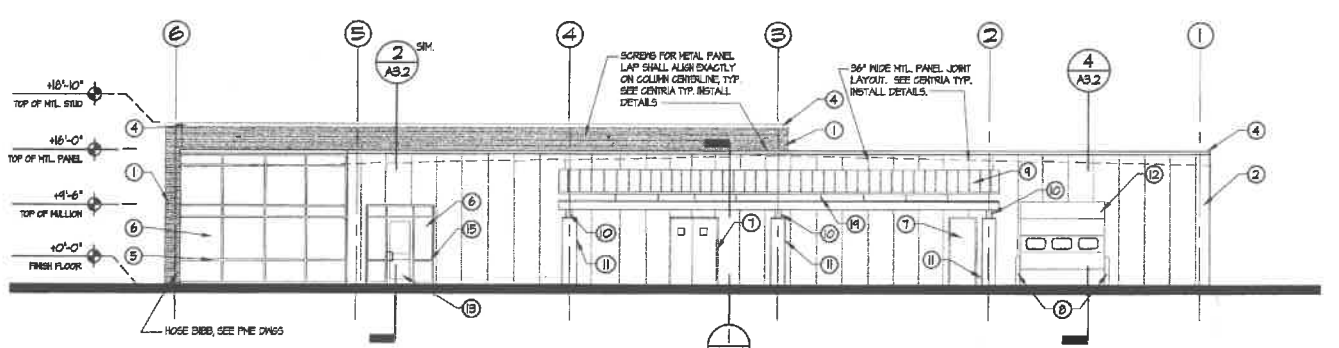
B LEFT ELEVATION
 1/8" = 1'-0"

0451.01-EL



C REAR ELEVATION
 1/8" = 1'-0"

0451.01-EL

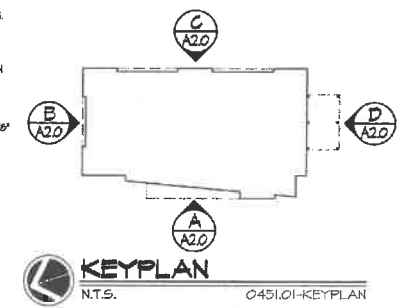


D RIGHT ELEVATION
 1/8" = 1'-0"

0451.01-EL

EXTERIOR MATERIAL SCHEDULE

- | | | |
|----|---|--|
| 1 | CENTRIA CONCEPT SERIES CONCEALED FASTENER PREFORMED METAL WALL SYSTEM | EVERGREEN |
| 2 | CENTRIA VERSAWALL SERIES, STRUTTED METAL WALL SYSTEM | OFF WHITE |
| 3 | ALUMINUM COLUMN COVER | PREFINISHED TO MATCH CENTRIA VERSAWALL METAL PANEL, BY UNI-CLAD OR EQUAL |
| 4 | PREFINISHED METAL COPING | FINISH TO MATCH ADJACENT CENTRIA WALL PANEL SYSTEM COLOR |
| 5 | ALUMINUM CURTAINWALL | KANNEER 8000 OR APPROVED EQUAL - CLEAR ANODIZED |
| 6 | GLAZING | 1" INSULATED, SEE SHEET A6.0 AND SPECS |
| 7 | EXTERIOR HOLLOW METAL DOOR AND FRAME | COLOR TO MATCH CENTRIA VERSAWALL PANEL |
| 8 | BOLLARD | 45" X 6" DIA CONCRETE FILLED STEEL BOLLARD, SEE DETAIL S/A3.2 |
| 9 | STANDING SEAM METAL PANEL | AEP SPAN, SPANSEAM COLOR TO MATCH CENTRIA CONCEPT SERIES EVERGREEN |
| 10 | STEEL COLUMN | GALVANIZED STEEL COLUMN |
| 11 | CONCRETE COLUMN BASE | 30" DIA, 8'-0" TALL, PAINT TO MATCH VERSAWALL PANEL |
| 12 | CONCRETE COLUMN BASE | 30" DIA, 8'-0" TALL, PAINT TO MATCH VERSAWALL PANEL |
| 13 | ALUMINUM SECTIONAL OVERHEAD DOOR | INSULATED ALUMINUM, COLOR TO MATCH VERSAWALL PANEL |
| 14 | MEDIUM STYLE ALUMINUM STOREFRONT DOOR | FINISH TO MATCH CURTAINWALL AND STOREFRONT |
| 15 | SIGNAGE | N.L.G. COORDINATE BY OWNERS SIGNAGE VENDOR |
| 16 | ALUMINUM STOREFRONT | KANNEER TRIFAB V6 48" CLEAR ANODIZED-FRONT GLAZED |
| 17 | ALUMINUM STOREFRONT WINDOW | KANNEER TRIFAB V6 48" CLEAR ANODIZED-FRONT GLAZED |
| 18 | ATH | ATH MAGNIE N.L.G. COORDINATE SIZE AND LOCATION BY DISEOLD DWSG. |
| 19 | OVERFLOW SUPPER | SEE DETAIL S/A8.1 |
| 20 | EXPOSED STEEL TRUSS | FINISH TO MATCH CENTRIA CONCEPT SERIES EVERGREEN |
| 21 | ALUMINUM COLUMN COVER | PREFINISHED TO MATCH CENTRIA CONCEPT SERIES EVERGREEN COLOR |
| 22 | LAMES TONGUE OVERFLOW DRAIN | STAINLESS STEEL, MOUNT 8" AFF. |



| | |
|-----------|------------|
| PROJECT | 0451.01 |
| DATE | 02-28-2005 |
| REVISIONS | |
| ▲ | |
| ▲ | |
| ▲ | |
| ▲ | |

A20
 EXTERIOR ELEVATIONS

THIS DOCUMENT IS THE SOLE PROPERTY OF LYALL DESIGN ARCHITECTS, INC. A PROFESSIONAL CORPORATION, NORFOLK, VIRGINIA. THE REPRODUCTION IN WHOLE OR IN PART OR THE MODIFICATION OF ANY DETAIL OR DESIGN MAY NOT BE MADE WITHOUT EXPRESS WRITTEN CONSENT. COPYRIGHT 2005