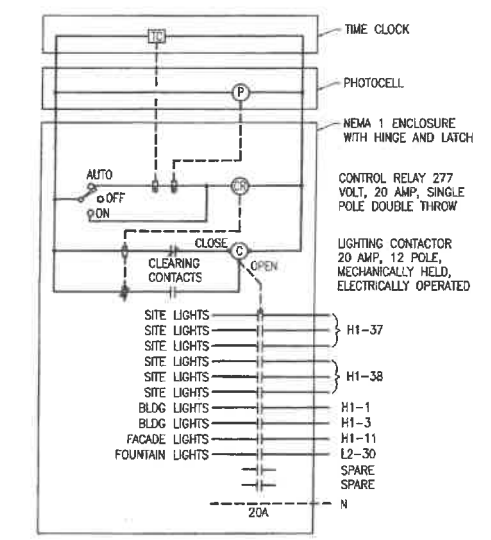
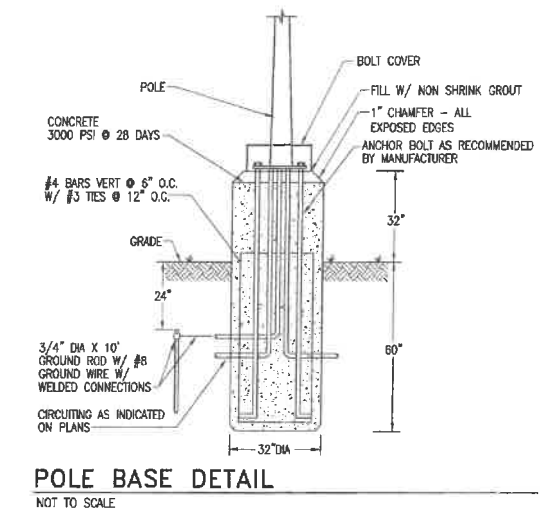


ELECTRICAL SITE PLAN
SCALE: 1" = 30' - 0"

- NOTES THIS SHEET**
- 1 PROPOSED LOCATION OF DOMINION NORTH CAROLINA POWER CO. TRANSFORMER.
 - 2 THREE 4" EMPTY CONDUITS WITH PULL STRINGS FOR POWER COMPANY SERVICE CONDUCTORS.
 - 3 RUN 3 #8, 1 #8 GROUND IN 3/4" C. PROVIDE IN-GRADE, COMPOSITE JUNCTION BOXES WHERE REQUIRED. ALTERNATE PHASES OF 3 PHASE CIRCUIT AS INDICATED. RUN CIRCUIT VIA LIGHTING CONTACTOR "SLC".
 - 4 COORDINATE EXACT LOCATION OF POST INDICATOR VALVE PRIOR TO ROUGH IN.
 - 5 PROVIDE CONNECTION FOR FOUNTAIN. COORDINATE EXACT REQUIREMENTS WITH EQUIPMENT PROVIDED PRIOR TO ROUGH-IN.

LYALL DESIGN ARCHITECTS

430 WORLD TRADE CENTER
NEWPORT NEWS, VIRGINIA 23601
757 623 6261 FAX 757 622 6428



NEW FACILITY FOR
GATEWAY BANK OPERATIONS CENTER
ELIZABETH CITY, NORTH CAROLINA

PROJECT	048/R
DATE	2-21-05
REVISIONS	
△	
△	
△	
△	

E1.1
ELECTRICAL
SITE PLAN

1" = 30'-0"

ROACH CONSULTING ENGINEERS
AN COLLEGE PLACE, SUITE 100 B
NEWPORT NEWS, VIRGINIA 23601
757-887-6400 FAX 757-887-6500
www.roachconsulting.com

THIS DOCUMENT IS THE SOLE PROPERTY OF LYALL DESIGN ARCHITECTS, INC. A PROFESSIONAL CORPORATION, NEWPORT NEWS, VIRGINIA. THE REPRODUCTION IN WHOLE OR IN PART OR THE MODIFICATION OF ANY PARTIAL OR DESIGN FACT NOT BE MADE WITHOUT EXPRESS WRITTEN CONSENT. COPYRIGHT 2005