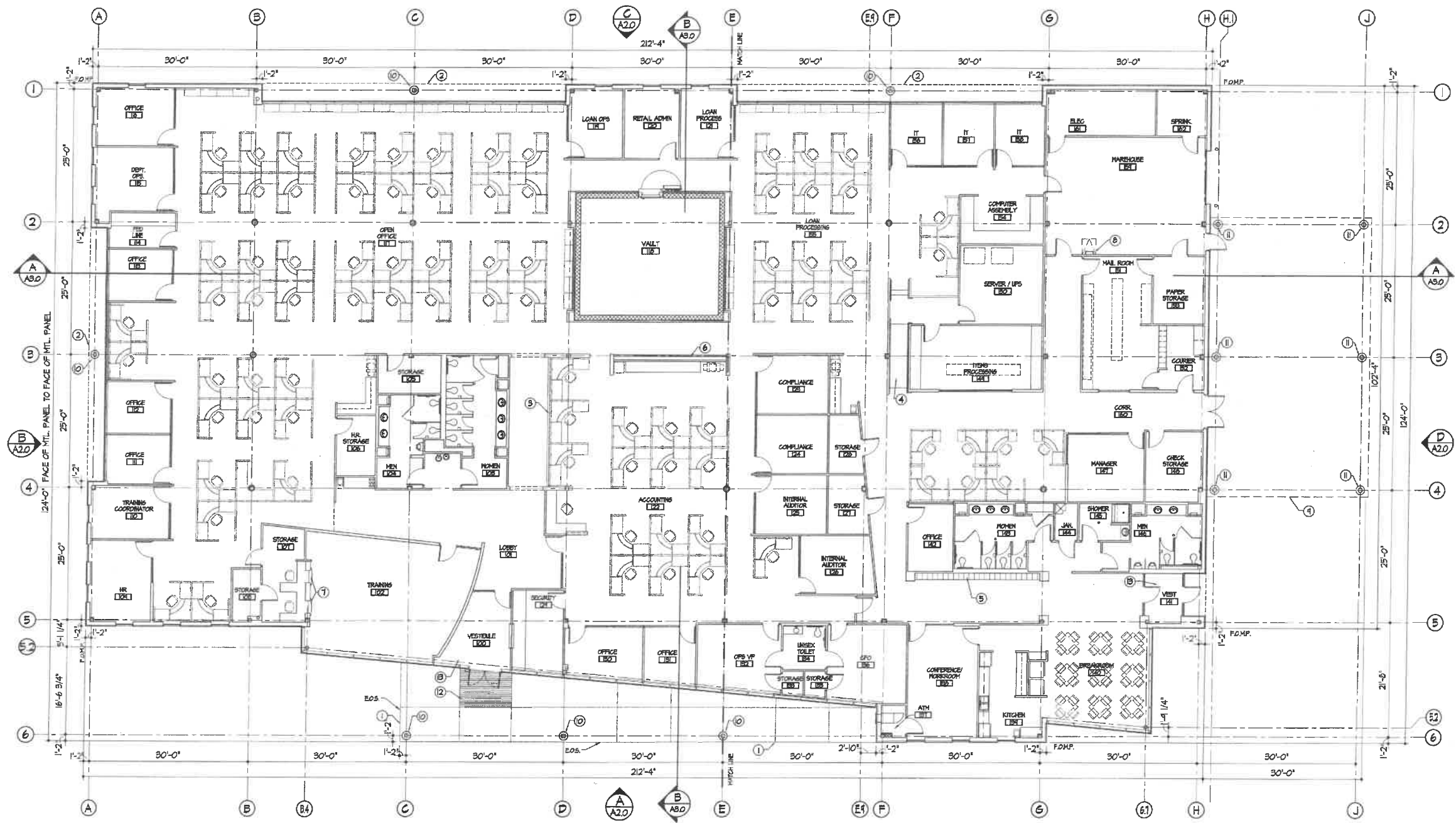




401 WORLD TRADE CENTER  
 NORFOLK, VIRGINIA 23502  
 757 622 6264 FAX 757 622 6465



NEW FACILITY FOR  
**GATEWAY BANK OPERATIONS CENTER**  
 ELIZABETH CITY, NORTH CAROLINA



**OVERALL FLOOR PLAN**

1/8" = 1'-0"

0451.01-MP

**FLOOR PLAN LEGEND**

- F.O.M.P. = FACE OF METAL PANEL
- E.O.S. = EDGE OF SLAB
- ① = NEW WORK NOTE

**GENERAL NEW WORK NOTES**

1. UNLESS OTHERWISE NOTED ALL DIMENSIONS ARE TO FACE OF STUD FRAMING OR CENTERLINE OF COLUMN.
2. TYPICAL INTERIOR DOOR OFFSET TO BE 4" TO BACK OF FRAME U.S.A.
3. SEE ENLARGED FLOOR PLANS ON SHEETS A11 AND A12 FOR NOTES, DIMENSIONS AND OTHER DESCRIPTIONS OF MATERIALS NOT INDICATED ON THE OVERALL FLOOR PLAN ON SHEET A10.
4. SEE SHEET F10 FOR FINISHES.
5. TYPICAL INTERIOR COLUMN WRAP FRAMING SHALL BE 3/8" ON 1/2" METAL STUDS HELD TIGHT TO THE COLUMN UNLESS INDICATED OTHERWISE.
6. FURNITURE, FIXTURES, & EQUIPMENT, N.L.C.
7. TYPICAL INTERIOR CIRCULAR COLUMN WRAP SHALL BE 3/8" FINIS DETAILED ON A14.
8. EDGE OF TURNDOWN CONCRETE SLABS HELD BACK 2 1/2" OFF OF FACE OF METAL PANEL, TYP U.S.A.

**NEW WORK NOTES (THIS SHEET ONLY)**

- ① LINE OF EDGE OF SLAB AND HTL. PANEL CANOPY ABOVE
- ② LINE OF HTL. PANEL SOFFIT ABOVE
- ③ PARTIAL HEIGHT MALL. SEE PARTITION TYPES ON A11
- ④ RAMP UP 12" A.F.F. FOR RAISED FLOOR ACCESS. SEE DETAILS SHEET A10 AND SPECS.
- ⑤ 15"0. X 12"0. DOUBLE-TIER LOCKERS. SEE ELEVATION F1A.1 AND SPECS.
- ⑥ PLANTER SHELF, SEE SECTION UAB.2
- ⑦ TELLER TRAINING COUNTER. SEE CASEWORK ELEVATIONS AB.1
- ⑧ LADDER ACCESS TO ROOF HATCH ABOVE. SEE SECTION 5/A.8.1
- ⑨ ROOF OVER COVERED COURSER DRIVE UP AREA
- ⑩ ALUM. COLUMN COVER. SEE DETAIL 4/A1.4
- ⑪ STEEL COLUMN CANOPY SUPPORT IN CONC. ENGAGED BASE. SEE ELEVATIONS, SHEET A2.0
- ⑫ EXTERIOR RECESSED ENTRANCE GRID SYSTEM BY GUS GROUP. SEE SPECS. SEE DETAIL 5/A.5.4
- ⑬ INTERIOR FLOOR MAT. COORDINATE INTERIOR CLEARANCES. SEE FINISH PLAN AND SPECS.



**KEYPLAN**  
 N.T.S. 0451.01-KEYPLAN

PROJECT	0451
DATE	02-28-2005
REVISIONS	
▲	
▲	
▲	
▲	

**A10**  
 OVERALL FLOOR PLAN