

2 PROMOTIONAL RENT OPTIONS!

4001 N CLASSEN BLVD, OKLAHOMA CITY, OK 73118



OFFERING SUMMARY

Available SF:	1,065 - 2,339 SF
Lease Rate:	\$14.00 SF (Full Service)
Lot Size:	0.91 Acres
Year Built:	1973
Building Size:	16,524
Renovated:	2017
Zoning:	O2
Market:	Oklahoma City
Submarket:	North

PROPERTY OVERVIEW

Several configurations available for lease in this recently renovated and access controlled building. Some spaces are divisible.

SPRING RENT PROMO:
MONTHS 1 & 2 FREE WITH A 2 YEAR LEASE.
MONTHS 1, 13, & 25 FREE ON A 3 YEAR LEASE.

AVAILABLE SPACES

SPACE	LEASE RATE	SIZE (SF)
Ste 100	\$14.00 SF/yr	2,038 SF
Ste 105	\$14.00 SF/yr	2,339 SF
Ste 116	\$14.00 SF/yr	1,413 SF
Ste 200	\$14.00 SF/yr	1,065 SF

PROPERTY HIGHLIGHTS

- REFRESHED RATE!
- Access Control & 2 Entrances
- Abundant parking
- Highly visible building
- Pricing great for Non-Profits
- Professionally managed
- Recently renovated
- New Elevator & HVAC
- New paint/carpet

PAUL SWALES

Equity Commercial Realty II, LLC.
pswales@equityrealty.net

(405) 701- 3505 x218 office
(405) 420- 6244 cell
(800) 486- 6803 fax

JOSH WHITE, CCIM

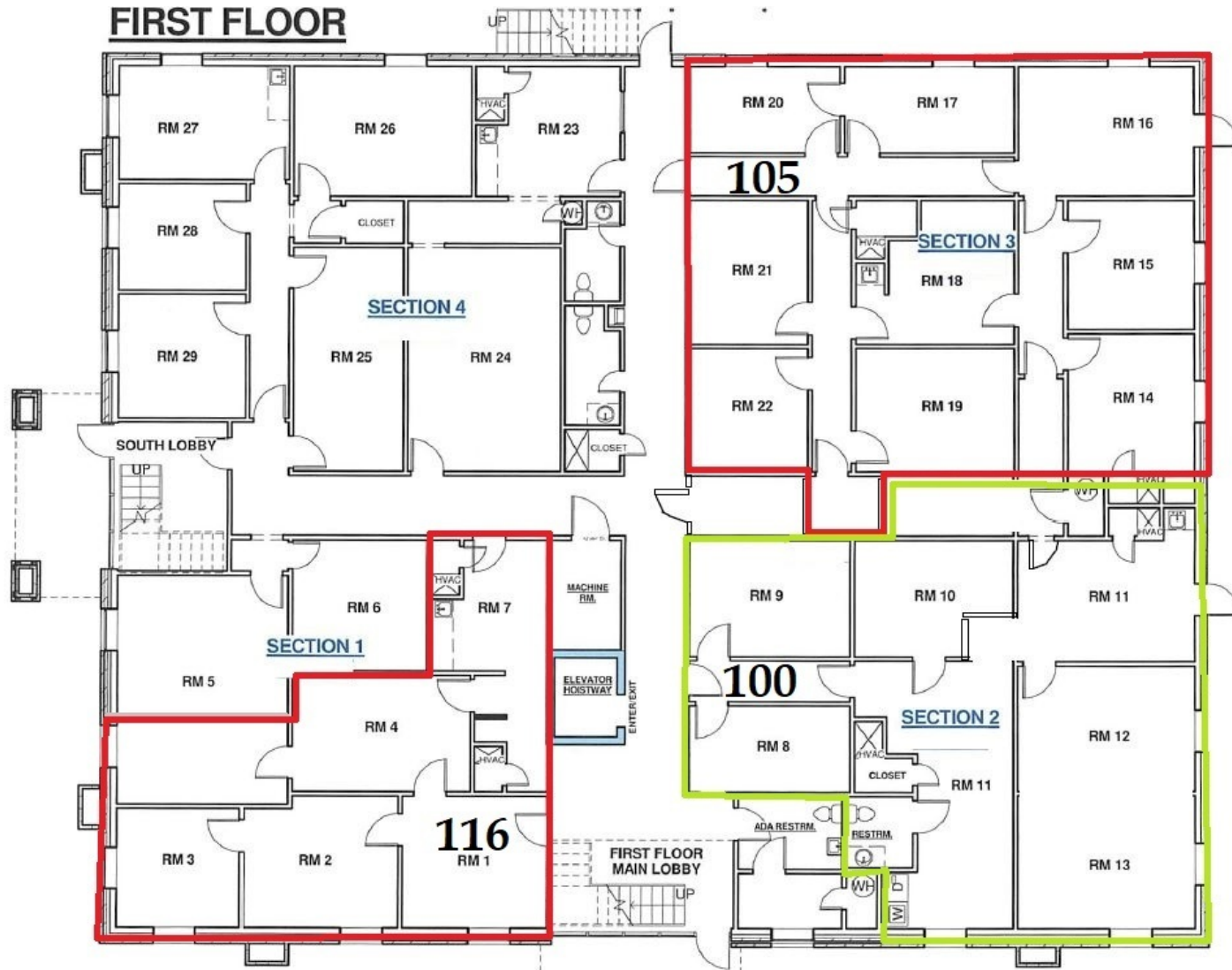
Equity Commercial Realty II, LLC.
josh@fleskeholding.com

(405) 701- 3505 x221 office
(405) 417- 6761 cell
(800) 486- 6803 fax



4001 N. CLASSEN OFFICE BUILDING

4001 N CLASSEN BLVD, OKLAHOMA CITY, OK 73118



PAUL SWALES

Equity Commercial Realty II, LLC.
pswales@equityrealty.net

(405) 701- 3505 x218 office
(405) 420- 6244 cell
(800) 486- 6803 fax

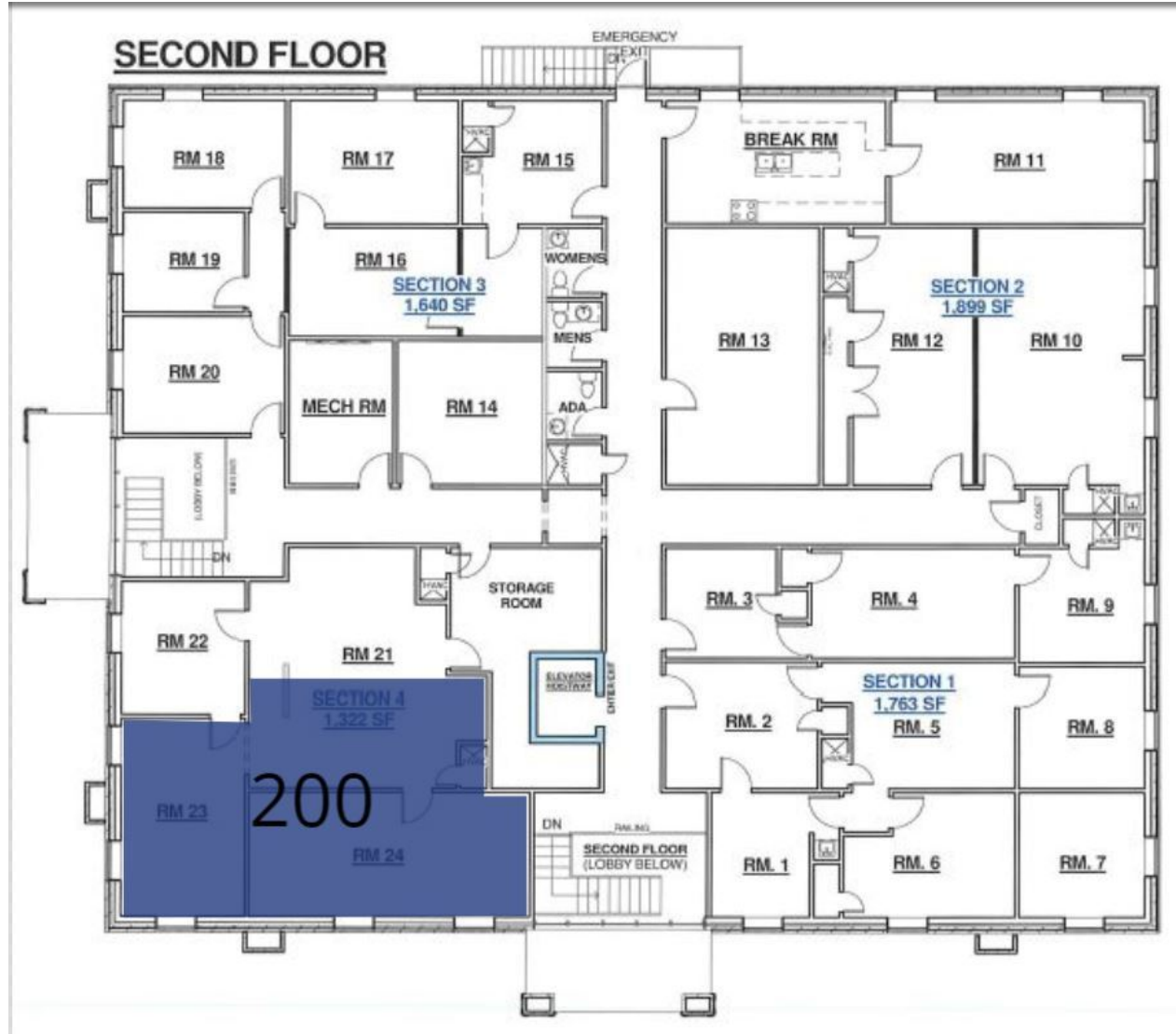
JOSH WHITE, CCIM

Equity Commercial Realty II, LLC.
josh@fleskeholding.com

(405) 701- 3505 x221 office
(405) 417- 6761 cell
(800) 486- 6803 fax

4001 N. CLASSEN OFFICE BUILDING

4001 N CLASSEN BLVD, OKLAHOMA CITY, OK 73118



PAUL SWALES

Equity Commercial Realty II, LLC.
pswales@equityrealty.net

(405) 701- 3505 x218 office
(405) 420- 6244 cell
(800) 486- 6803 fax

JOSH WHITE, CCIM

Equity Commercial Realty II, LLC.
josh@fleskeholding.com

(405) 701- 3505 x221 office
(405) 417- 6761 cell
(800) 486- 6803 fax