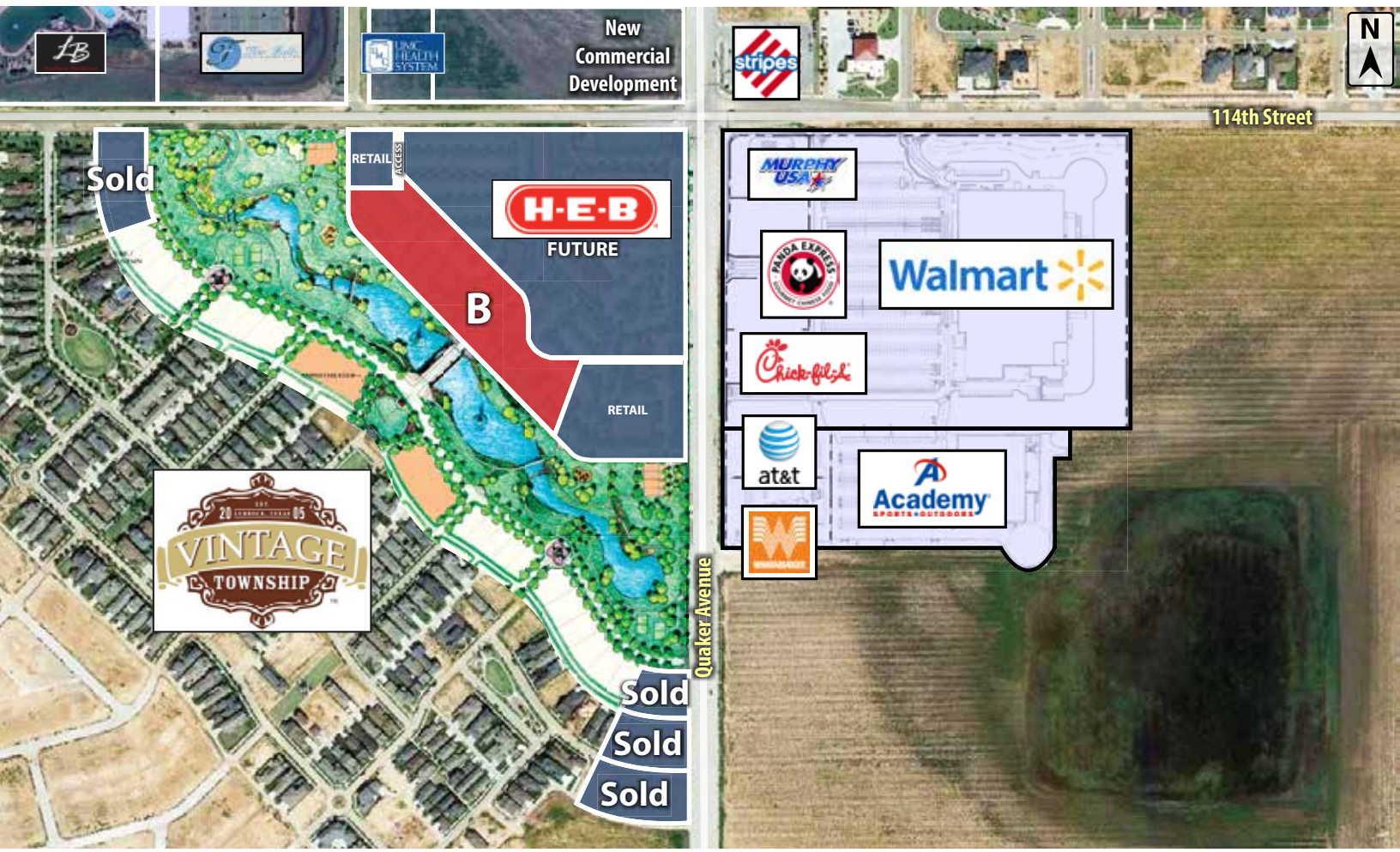




**SEC 114TH STREET & QUAKER AVENUE
LUBBOCK, TX 79424**

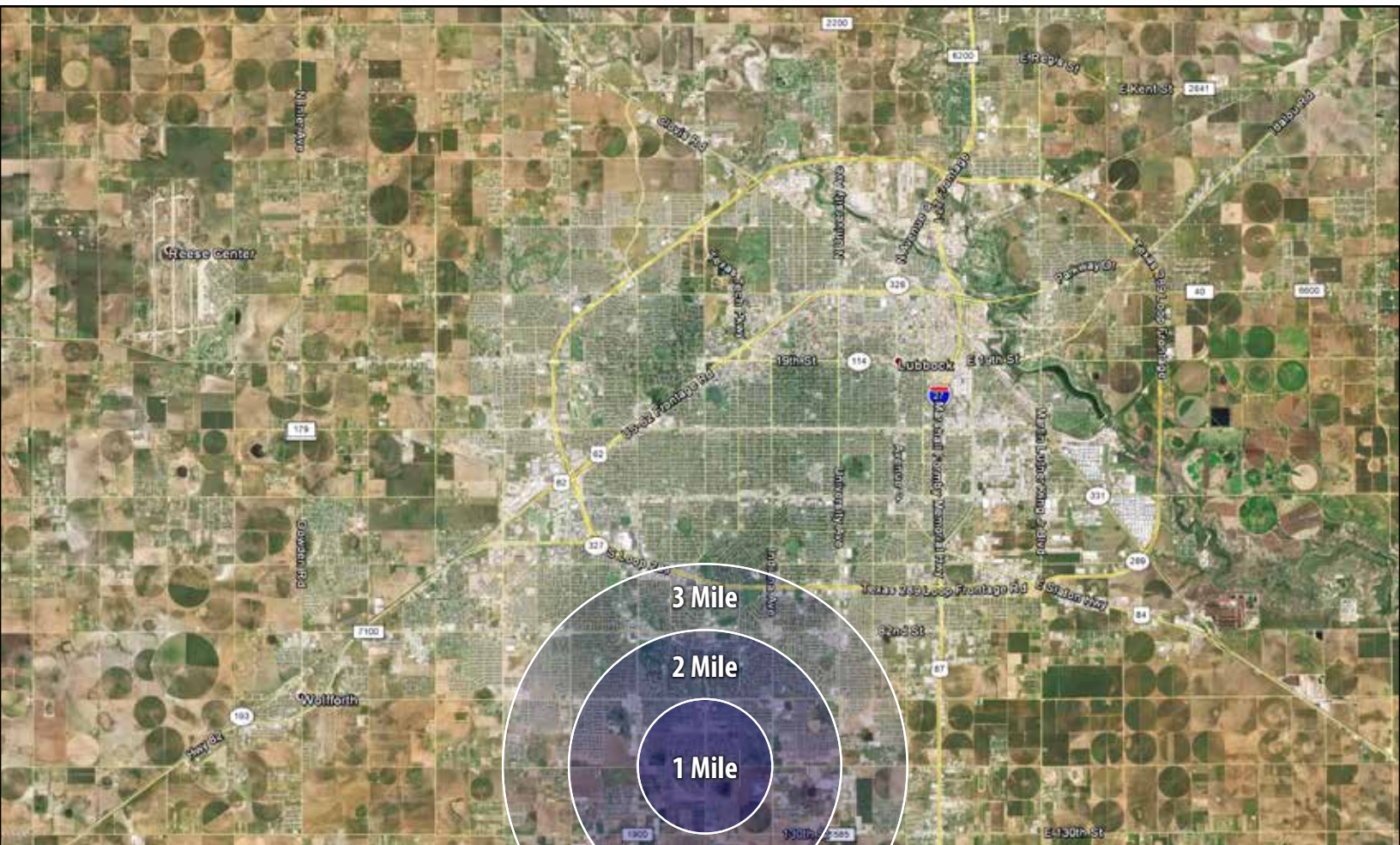


NEARBY (0.5 MILES)



PROPERTY INFORMATION

LOCATION:	Located in south Lubbock at the southwest corner of 66th Street & Quaker Avenue.
DESCRIPTION:	This tract is in a well-established area of south Lubbock. A \$7.75 million 7-lane thoroughfare expansion has been completed on Quaker Avenue from 98th Street to FM 1585.
PRICE & SIZE:	Tract B - 5.2 Acres - Call broker for pricing

LUBBOCK, TX
FAR AERIAL


DEMOGRAPHICS

POPULATION	1 MILES	3 MILES	5 MILES
TOTAL POPULATION	4,630	22,181	52,545
MEDIAN AGE	40.9	40.0	39.0
MEDIAN AGE (MALE)	40.4	39.2	37.9
MEDIAN AGE (FEMALE)	41.4	40.8	40.0
HOUSEHOLDS & INCOME	1 MILES	3 MILES	5 MILES
TOTAL HOUSEHOLDS	1,783	8,919	21,043
# OF PERSONS PER HH	2.6	2.5	2.5
AVERAGE HH INCOME	\$108,481	\$108,503	\$95,184
AVERAGE HOUSE VALUE	\$240,541	\$182,250	\$159,190

For Additional
Information Contact:



Beau Tucker, CCIM
The Land Man

806.784.3298 direct
806.470.3944 cell

BTucker@CBCWorldwide.com