

January 17, 2005

Goldenrod Business Group  
c/o Ali Akbari  
P.O. Box 4564  
Winter Park, FL 32793

**Proj: S.R. 50 Parcel - Orange, Florida**  
**Section 14, Township 22 South, Range 30 East**  
**(LWC File No. 95-004)**

**Re: Environmental Assessment**

Dear Mr. Akbari,

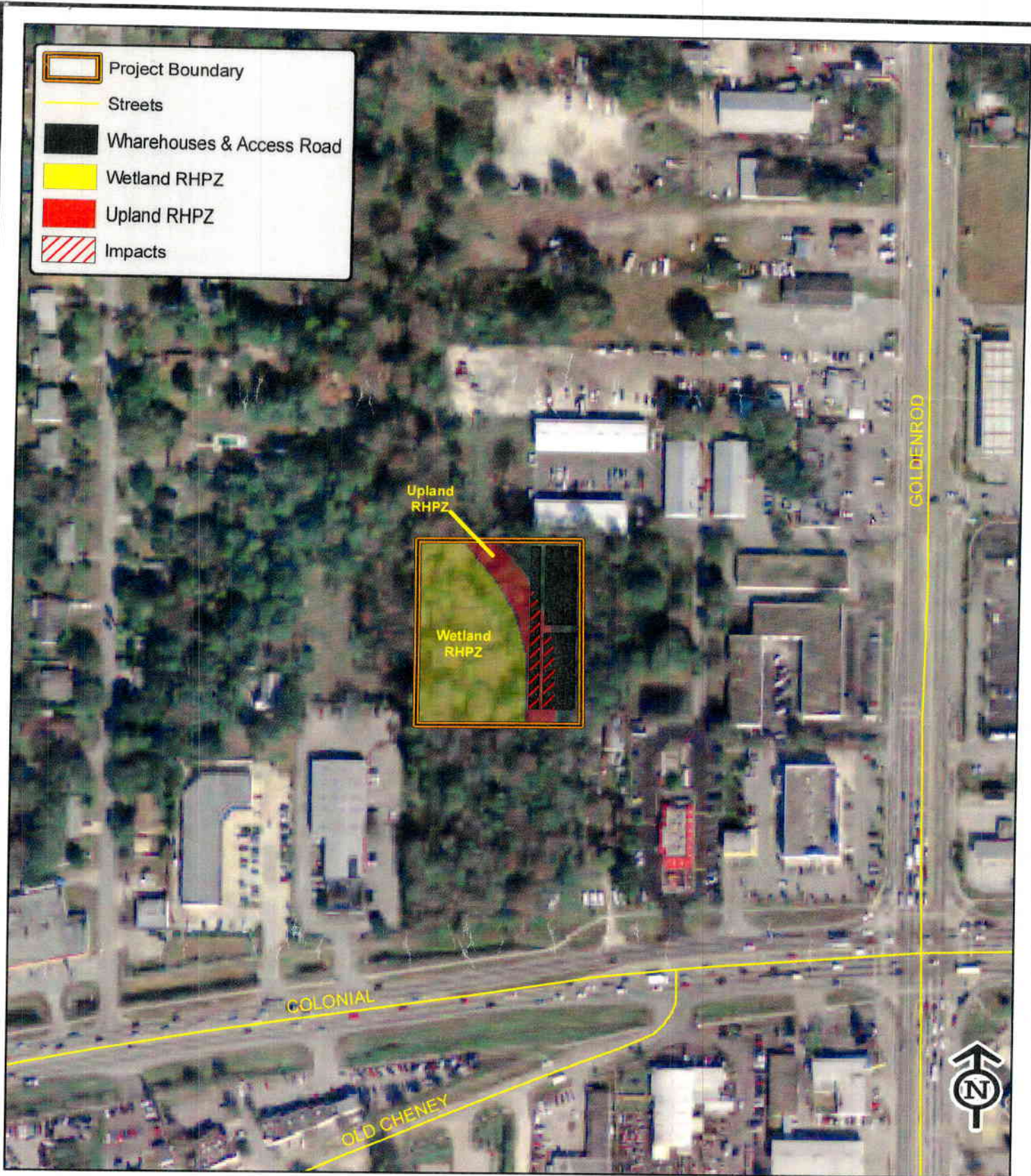
During December of 2004 Land Water Consulting, Inc. conducted a preliminary environmental assessment of the approximately 1.8-acre S.R. 50 Parcel Project. This site is located north of S.R. 50, between Goldenrod Road and Dorris Drive, in Section 14, Township 22 South, Range 30 East, in unincorporated Orange County (Figure 1, Figure 2). This environmental assessment included the following elements:

- review of soil types mapped within the site boundaries;
- evaluation of land use types/vegetative communities present;
- on-site evaluation and mapping of approximate wetland boundaries;
- field review for occurrence of protected species of flora and fauna; and,
- general wetland and wildlife permitting requirements.

## **SOILS**

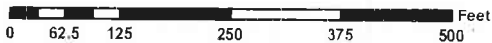
According to the Soil Survey of Orange County, Florida, prepared by the U.S. Department of Agriculture (USDA), Natural Resource Conservation Service (NRCS), four (4) soil types occur within the subject property boundaries (Figure 3). These soil types include the following:

- **34 - Pomello fine sand, 0 to 5 percent slopes**
- **41 - Samsula-Hontoon-Basinger association, depressional**
- **44 - Smyrna fine sand**
- **45 - Smyrna-Urban land complex**



## S.R. 50 Parcel Project







Environmental Assessment  
 Figure 6 - Development and Impact Map  
 Orange County, Florida



**LAND WATER CONSULTING, INC.**  
 ENVIRONMENTAL PERMITTING AND DESIGN



319 W. Main Street  
 Apopka, FL 32712  
 P: 407.464.0355  
 F: 407.464.0393

-  Project Boundary
-  Streets
-  34 - Pomello fine sand, 0 to 5 percent slopes
-  41 - Samsula-Hontoon-Basinger association, depressional
-  44 - Smyrna fine sand
-  45 - Smyrna-Urban land complex



# S.R. 50 Parcel Project

Environmental Assessment  
 Figure 3 - Soils Map  
 Orange County, Florida



**LAND WATER CONSULTING, INC.**  
 ENVIRONMENTAL PERMITTING AND DESIGN



319 W. Main Street  
 Apopka, FL 32712  
 P: 407.464.0355  
 F: 407.464.0393





## S.R. 50 Parcel Project

Environmental Assessment  
 Figure 2 - 2004 Aerial Map  
 Orange County, Florida



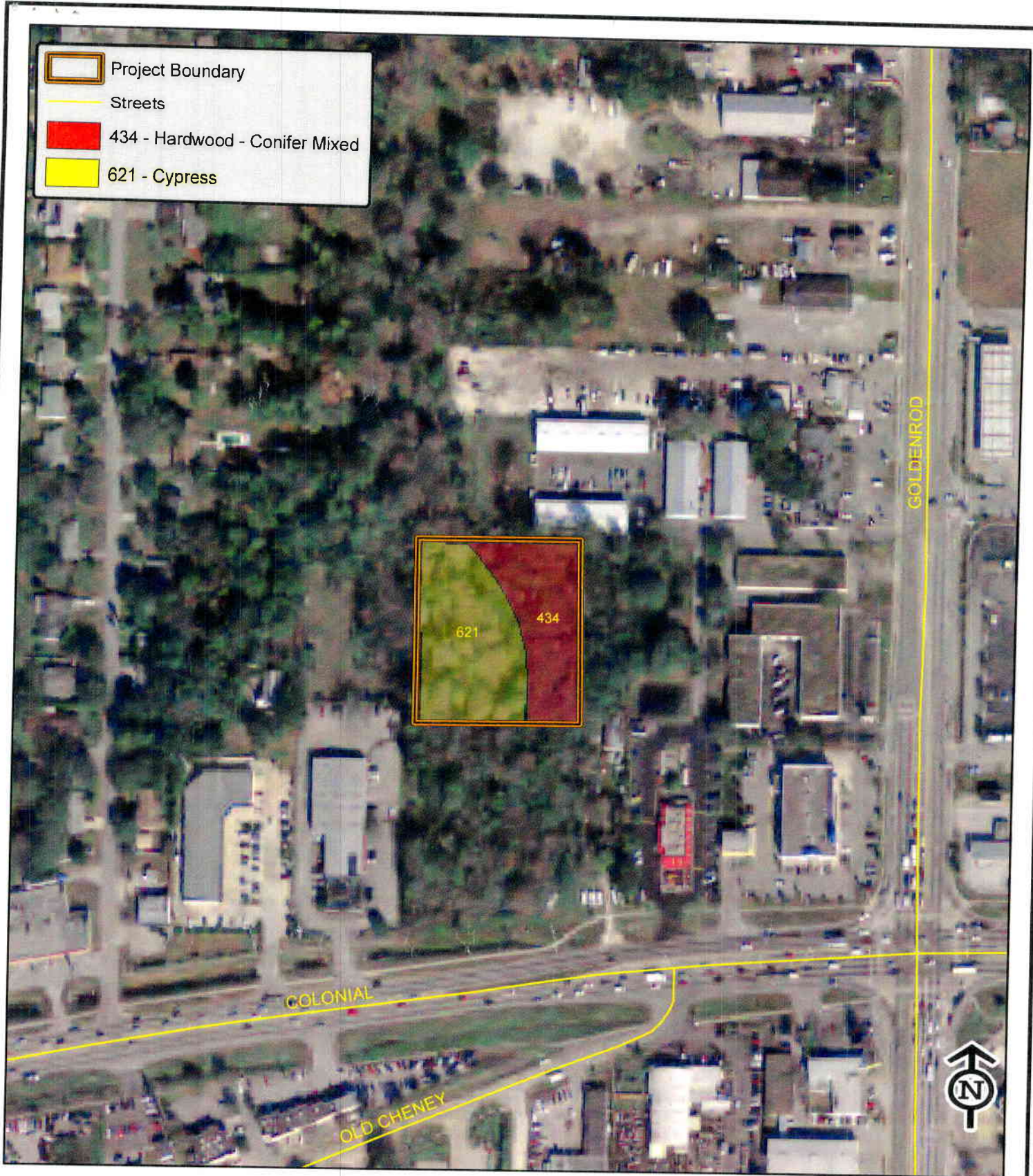
LAND WATER CONSULTING, INC.

ENVIRONMENTAL PERMITTING AND DESIGN



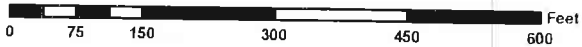
319 W. Main Street  
 Apopka, FL 32712  
 P: 407.464.0355  
 F: 407.464.0393





## S.R. 50 Parcel Project

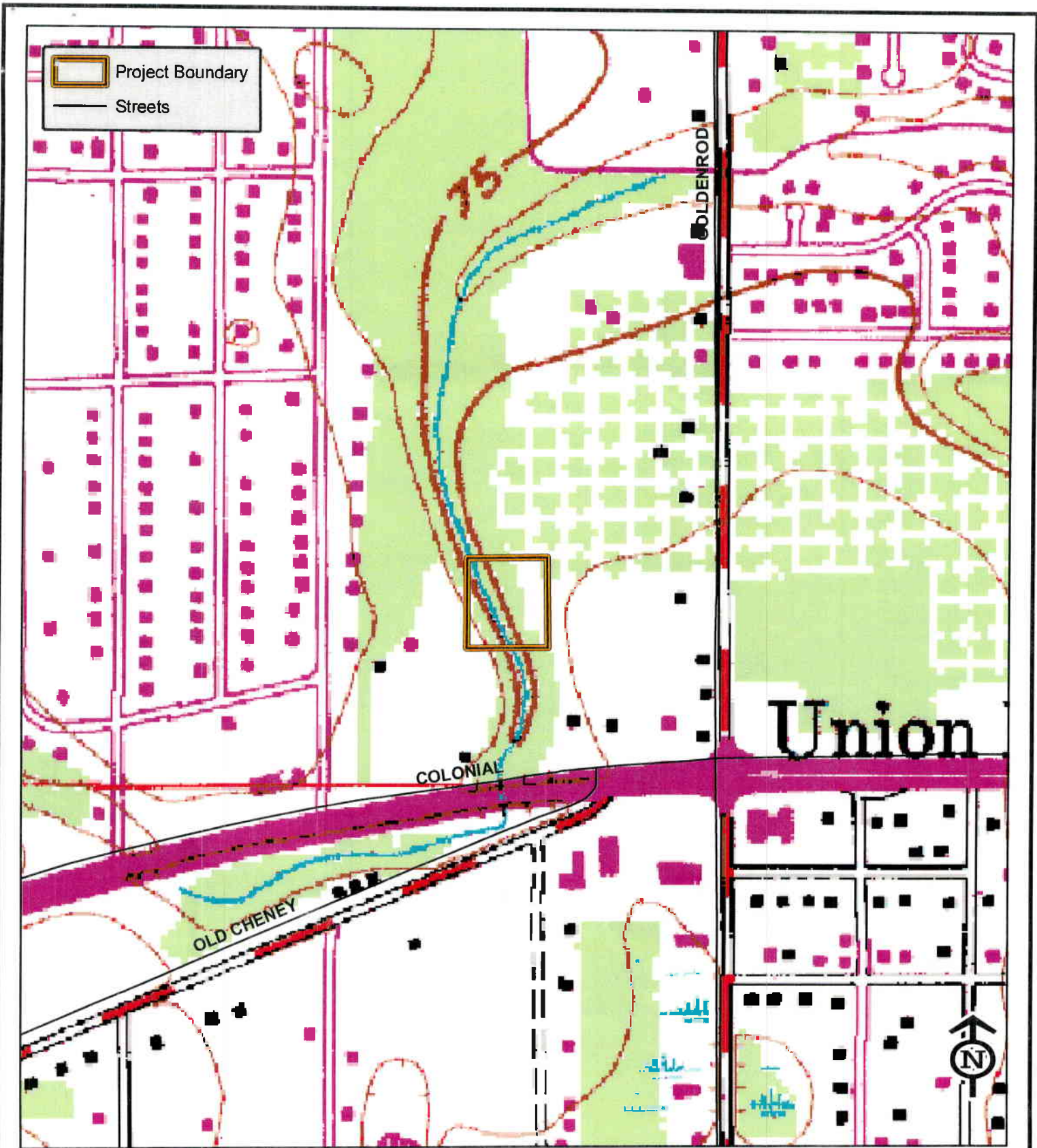
Environmental Assessment  
 Figure 5 - FLUCFCS Land Use Map  
 Orange County, Florida



**LAND WATER CONSULTING, INC.**  
 ENVIRONMENTAL PERMITTING AND DESIGN



319 W. Main Street  
 Apopka, FL 32712  
 P: 407.464.0355  
 F: 407.464.0393



## S.R. 50 Parcel Project

Environmental Assessment  
 Figure 4 - FLUCFCS Land Use Map  
 Orlando East Quadrangle  
 Orange County, Florida



**LAND WATER CONSULTING, INC.**  
 ENVIRONMENTAL PERMITTING AND DESIGN



319 W. Main Street  
 Apopka, FL 32712  
 P: 407.464.0355  
 F: 407.464.0393