

COUNTRY CLUB OFFICE PARK

4117 NW 122ND ST, OKLAHOMA CITY, OK 73120



OFFERING SUMMARY

Available SF:	1,707 - 4,455 SF
Lease Rate:	\$14.00 SF/yr (MG)
Year Built:	1983
Building Size:	12,802
Renovated:	2018
Market:	North Oklahoma City

PROPERTY OVERVIEW

Available for lease, Suite A is 4,275 SF configured to your needs, new flooring, paint and lighting, that can be split into two smaller units. This property has a beautiful patio and its location right off the Hefner Parkway provides an easy commute or access to other parts of the city. Suite B, 4,455 SF is a professional office space most recently utilized by law group. A competitive rate can get you into these nice spaces today.

PROPERTY HIGHLIGHTS

- Excellent Demographics
- Located near North Side Hospitals
- Great Price Point for Renovated Space
- Courtyard Patio
- Easy Access to Interstate and Turnpike

LOCATION OVERVIEW

This property is just west of the Hefner Parkway on the North side of NW 122nd. It is located within 1 mile of the Kilpatrick Turnpike and Memorial Road. It has excellent proximity to the Oklahoma Heart Hospital & Mercy Health Center and Integris Baptist Medical, making it wonderful choice for medical office space.

AVAILABLE SPACES

SPACE	LEASE RATE	SIZE (SF)
Suite-A	\$14.00 SF/yr	1,707 - 4,275 SF
Suite-B	\$14.00 SF/yr	4,455 SF

PAUL SWALES

Equity Commercial Realty II, LLC.
pswales@equityrealty.net

(405) 701- 3505 x218 office
(405) 420- 6244 cell
(800) 486- 6803 fax

JOSH WHITE, CCIM

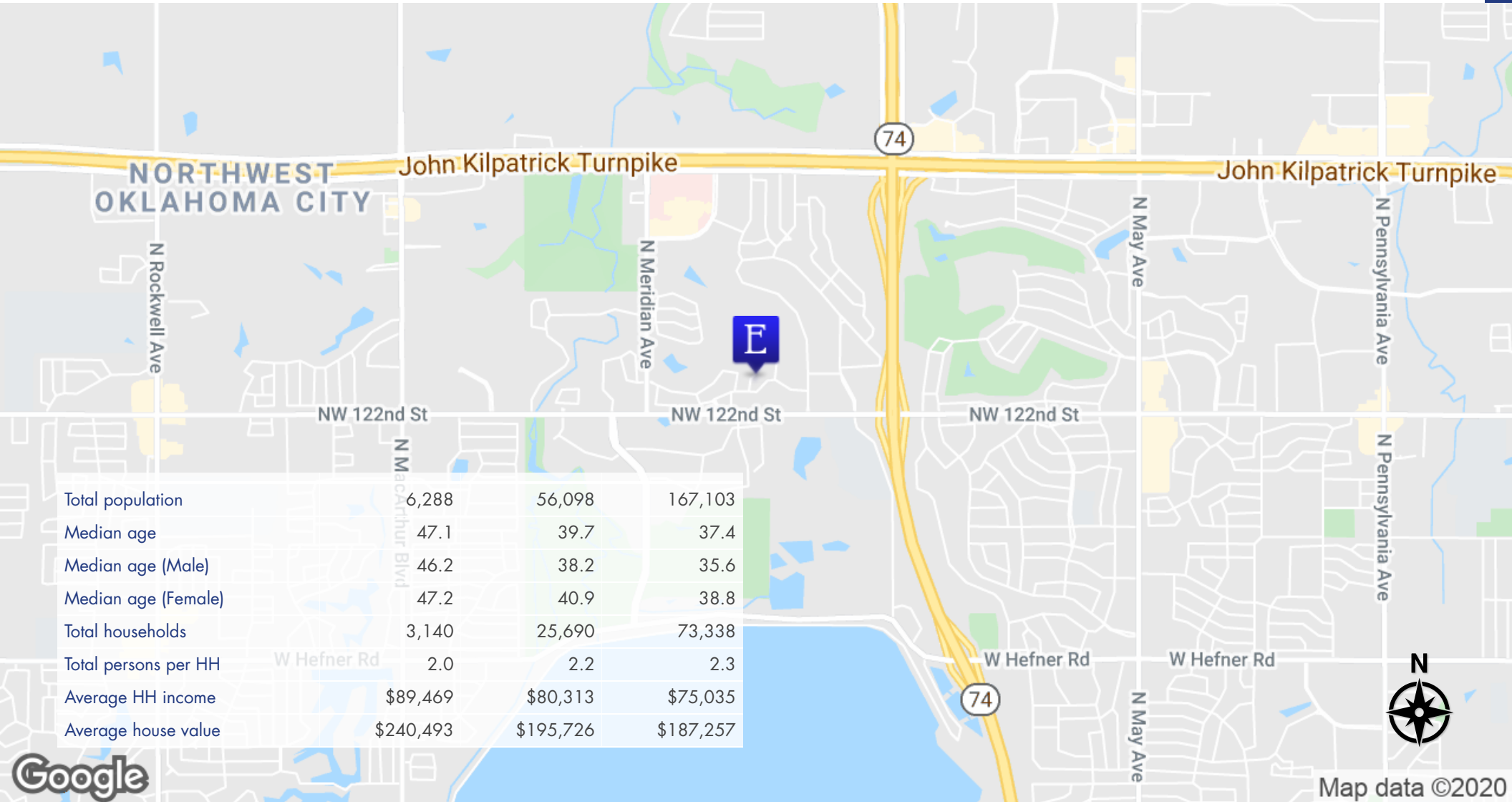
Equity Commercial Realty II, LLC.
josh@fleskeholding.com

(405) 701- 3505 x221 office
(405) 417- 6761 cell
(800) 486- 6803 fax



COUNTRY CLUB OFFICE PARK

4117 NW 122ND ST, OKLAHOMA CITY, OK 73120



PAUL SWALES

Equity Commercial Realty II, LLC.
pswales@equityrealty.net

(405) 701-3505 x218 office
(405) 420-6244 cell
(800) 486-6803 fax

JOSH WHITE, CCIM

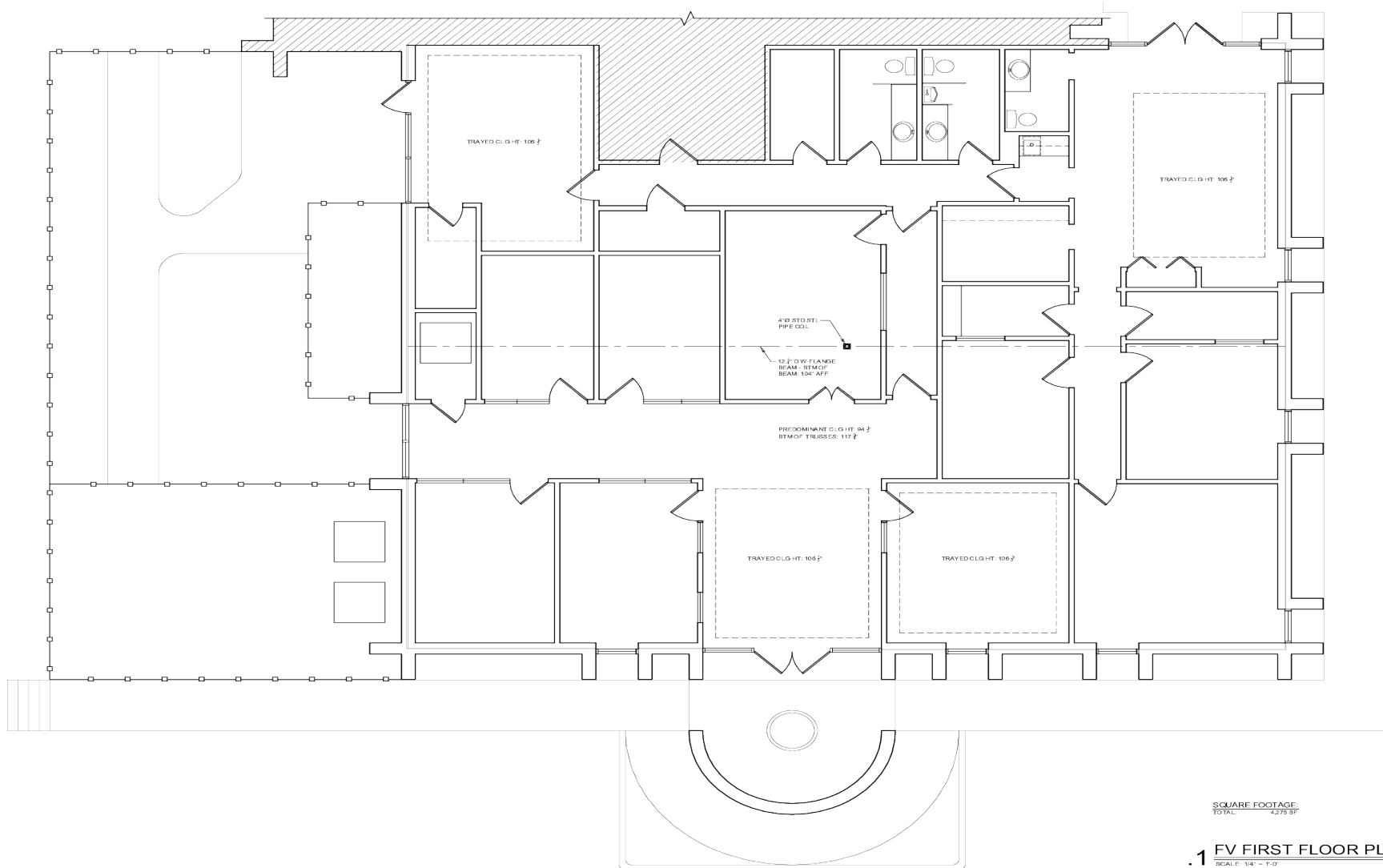
Equity Commercial Realty II, LLC.
josh@fleskeholding.com

(405) 701-3505 x221 office
(405) 417-6761 cell
(800) 486-6803 fax



COUNTRY CLUB OFFICE PARK

4117 NW 122ND ST, SUITE A OKLAHOMA CITY, OK 73120



SQUARE FOOTAGE
TOTAL: 4,275 SF

1 FV FIRST FLOOR PLAN
SCALE: 1/4" = 1'-0"

PAUL SWALES

Equity Commercial Realty II, LLC.
pswales@equityrealty.net

(405) 701- 3505 x218 office
(405) 420- 6244 cell
(800) 486- 6803 fax

JOSH WHITE, CCIM

Equity Commercial Realty II, LLC.
josh@fleskeholding.com

(405) 701- 3505 x221 office
(405) 417- 6761 cell
(800) 486- 6803 fax

