



OFFERING SUMMARY

Sale Price: \$17.50 / SF

Lot Size: 0.87 Acres

Zoning: C-3

Market: Oklahoma City

Submarket: Edmond Deer Creek

Price / SF: \$17.50

PROPERTY OVERVIEW

This 0.87 acre site is ideal for retail, office & restaurant uses. The area is constantly growing with new housing, apartments, retail. On the northeast corner of NW 192nd and Western on the South side of NW 192. This is a high income area with an average home value over \$200,000.

LOCATION OVERVIEW

Excellent location for an expanding retail operation, office or service business. On the hard corner of NW 192nd and Western, this site is adjacent to the new Stonebriar Retail Center, an upscale, well-manicured property. This site will accommodate a 6,450 sf building, with access to both Western and 192nd.

PROPERTY HIGHLIGHTS

- Excellent Demographics
- Fast Growing N OKC, Deer Creek, Edmond Area
- Perfect for Dental or Medical Use

DEMOGRAPHICS

	1 MILE	3 MILES	5 MILES
Total Households	1,594	18,548	42,563
Total Population	4,469	49,775	108,937
Average HH Income	\$104,556	\$93,147	\$87,424

PAUL SWALES

Equity Commercial Realty II, LLC.
pswales@fleskeholding.net

(405) 701- 3505 x218 office
(405) 420- 6244 cell
(800) 486- 6803 fax

JOSH WHITE, CCIM

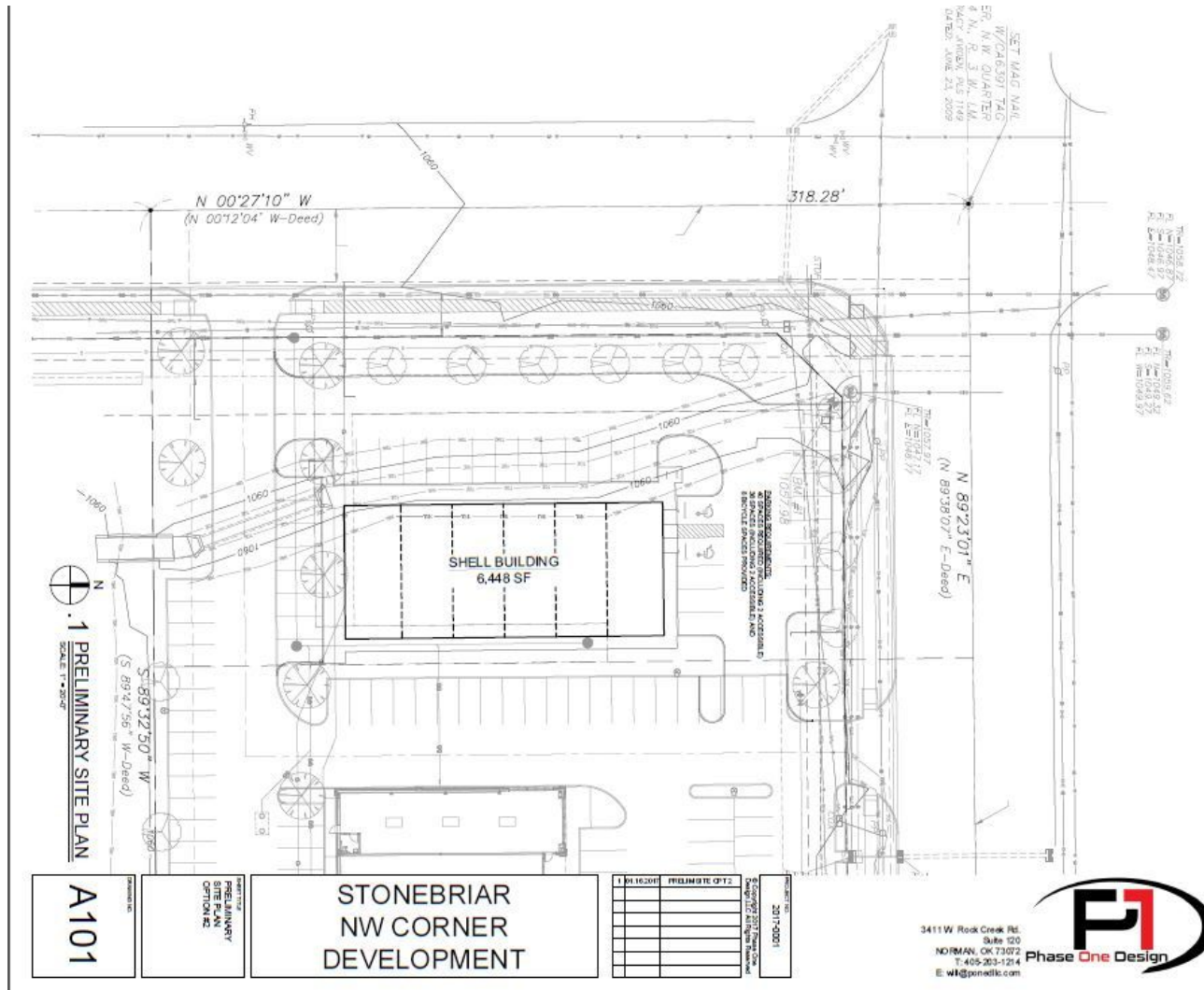
Equity Commercial Realty II, LLC.
josh@fleskeholding.com

(405) 701- 3505 x221 office
(405) 417- 6761 cell
(800) 486- 6803 fax



HARD CORNER NW 192ND AND WESTERN - STONEBRIAR LAND

19218 N WESTERN AVE, EDMOND, OK 73012



PROPOSED SITE PLAN

PAUL SWALES

Equity Commercial Realty II, LLC.
pswales@fleskeholding.net

(405) 701- 3505 x218 office
(405) 420- 6244 cell
(800) 486- 6803 fax

JOSH WHITE, CCIM

Equity Commercial Realty II, LLC.
josh@fleskeholding.com

(405) 701- 3505 x221 office
(405) 417- 6761 cell
(800) 486- 6803 fax

