



PROJECT TECH

3203 GENERAL HUDNELL DRIVE, SAN ANTONIO, TEXAS 78226

FOR LEASE INFORMATION:

AMBER AUSTIN aaustin@pelotoncre.com ext 242

TRAVIS WRIGHT twright@pelotoncre.com ext 263

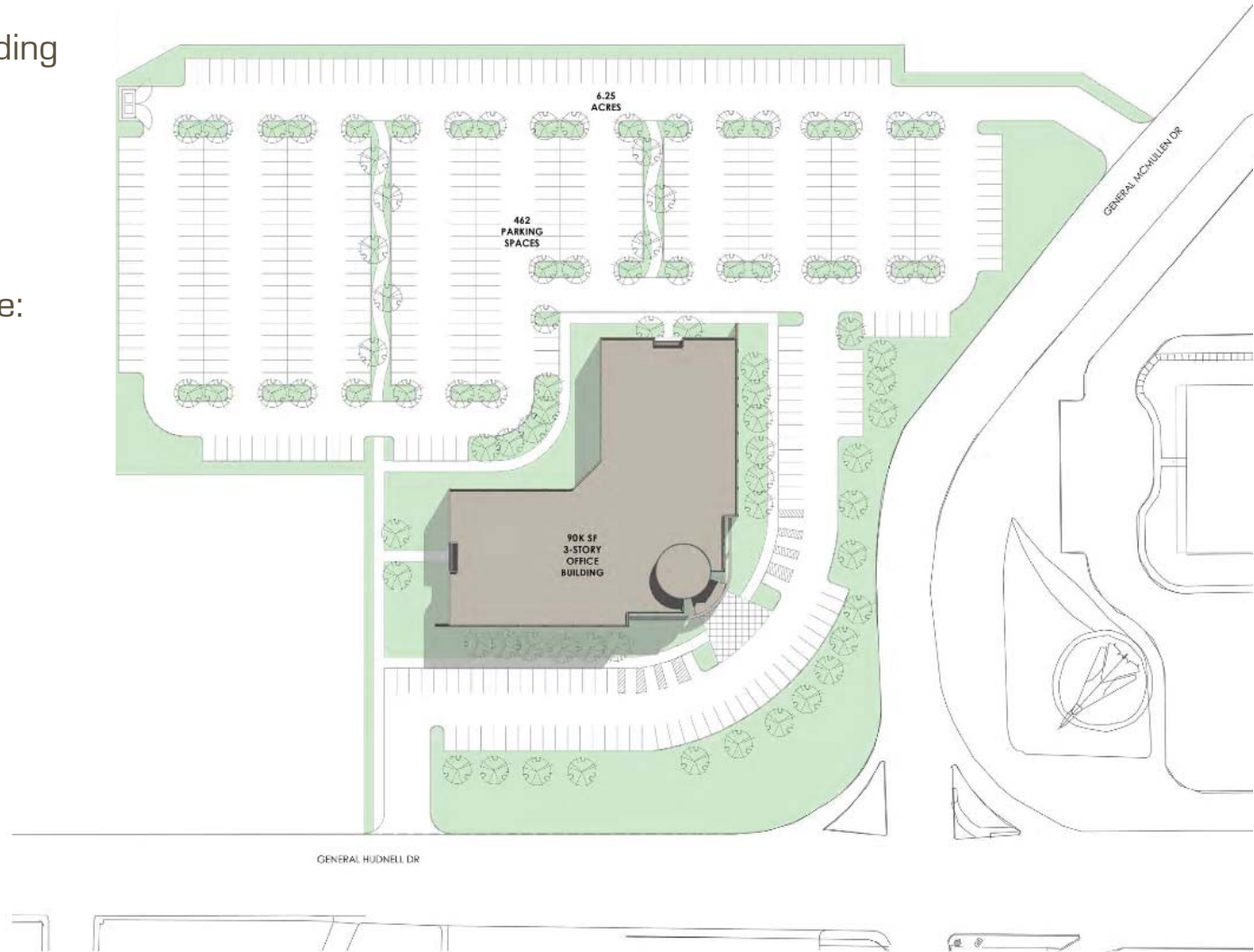
210.299.1172



PROPERTY HIGHLIGHTS

ESTIMATED BUILDING DELIVERY MARCH 2018

- ◇ ±86,442 SF three-story, office building
- ◇ Full redundant power
- ◇ Redundant path telecomm
- ◇ Campus-style setting
- ◇ 5:1000 parking ratio
- ◇ Port San Antonio co-tenants include:
 - 24th Airforce (AFCYBER)
 - 624th Operations Center
 - Boeing
 - Booz Allen Hamilton
 - Fidelis Cybersecurity
 - Northrop Grumman
 - GSA
 - Radiance Technologies



Click the above icons to learn more

PROJECT TECH

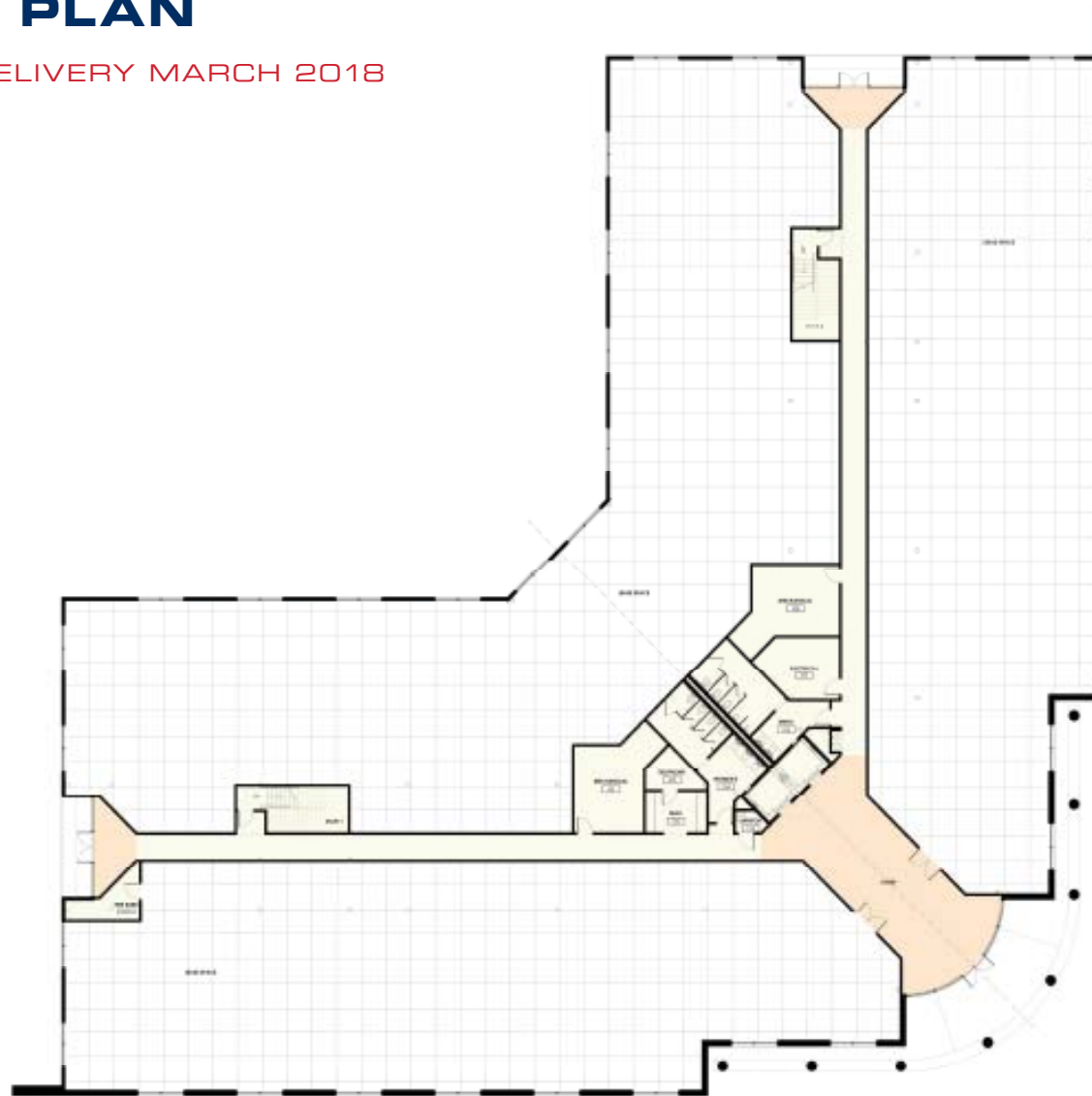
FOR LEASE INFORMATION:
AMBER AUSTIN aaustin@pelotoncre.com ext 242
TRAVIS WRIGHT twright@pelotoncre.com ext 263
210.299.1172



FIRST FLOOR PLAN

ESTIMATED BUILDING DELIVERY MARCH 2018

27,797 NRA



PROJECT TECH

FOR LEASE INFORMATION:

AMBER AUSTIN aaustin@pelotoncre.com ext 242

TRAVIS WRIGHT twright@pelotoncre.com ext 263

210.299.1172

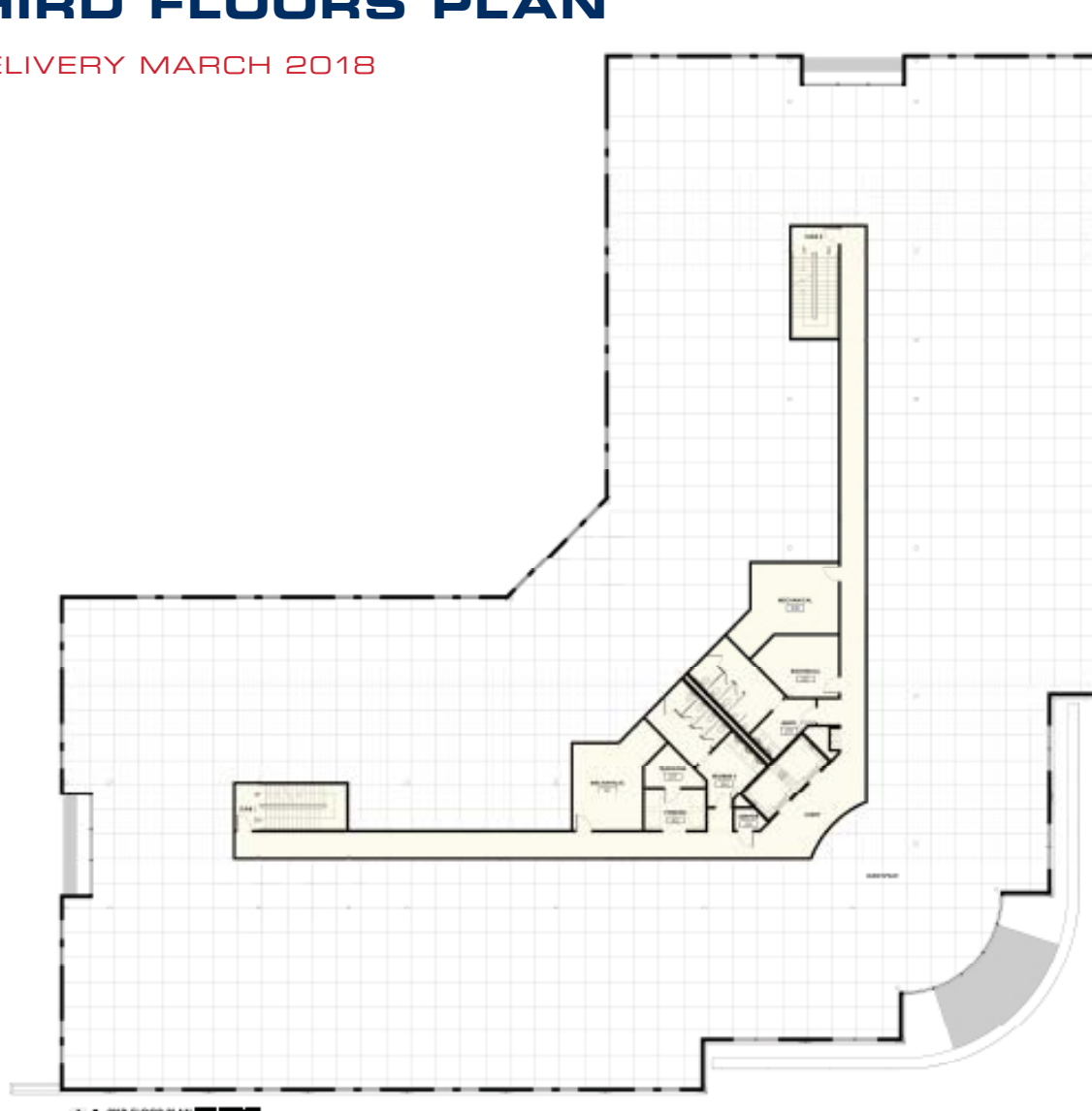


PELTON

SECOND & THIRD FLOORS PLAN

ESTIMATED BUILDING DELIVERY MARCH 2018

29,322 NRA



PROJECT TECH

FOR LEASE INFORMATION:

AMBER AUSTIN aaustin@pelotoncre.com ext 242

TRAVIS WRIGHT twright@pelotoncre.com ext 263

210.299.1172





The information regarding the Project and the Premises that is contained in these materials has been provided to Peloton Commercial Real Estate ("Broker") by the Owner of the Project or other parties hired by or affiliated with the Owner. To the best of Broker's knowledge and belief, the information contained herein is accurate. However, neither Broker nor any of its agents, employees or contractors makes, nor will they make, any representations, warranties or promises regarding the accuracy of such information.

PROJECT TECH

FOR LEASE INFORMATION:
AMBER AUSTIN aaustin@pelotoncre.com ext 242
TRAVIS WRIGHT twright@pelotoncre.com ext 263
210.299.1172



LOCATION

- ◇ Highway 90 access via 36th Street, S. General McMullen Drive and Highway 371/General Hudnell Drive
- ◇ VIA Metropolitan Serve

STRATEGIC PARTNER

Port Authority San Antonio Strategic Business Services

- ◇ Comprehensive development and construction department
- ◇ Business Development & Marketing
- ◇ Public Advocacy
- ◇ Workforce Development
- ◇ Incentives
- ◇ Logistics

**JBSA
LACKLAND**



PROJECT TECH

FOR LEASE INFORMATION:

AMBER AUSTIN aaustin@pelotoncre.com ext 242

TRAVIS WRIGHT twright@pelotoncre.com ext 263

210.299.1172



PELTON