

FOR LEASE
 45 Wall Street
 New York, NY



Overview

| | |
|-------------|--------------|
| SIZE | 2,952 SF |
| ASKING RENT | Upon Request |
| FRONTAGE | 34' 6" |
| POSSESSION | Q2 2018 |

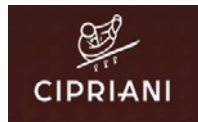
NEIGHBORING TENANTS



DEAN & DELUCA.
 sweetgreen

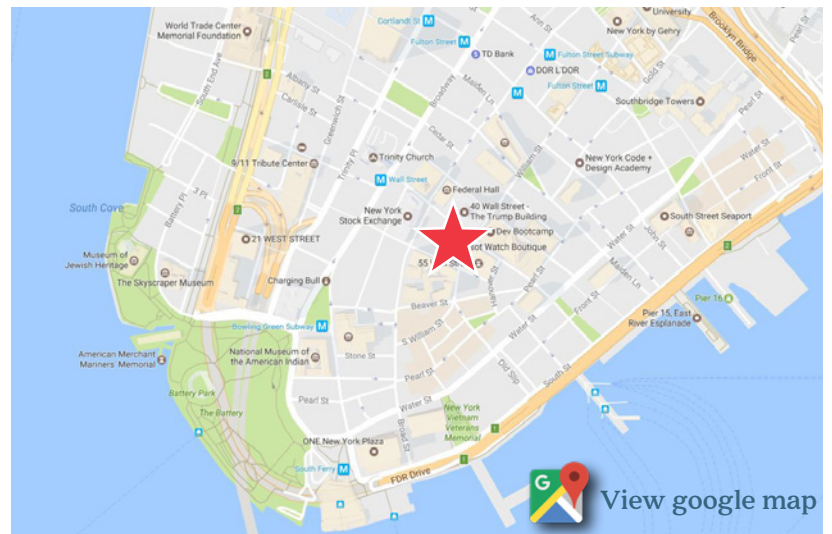


TIFFANY & CO.



Description

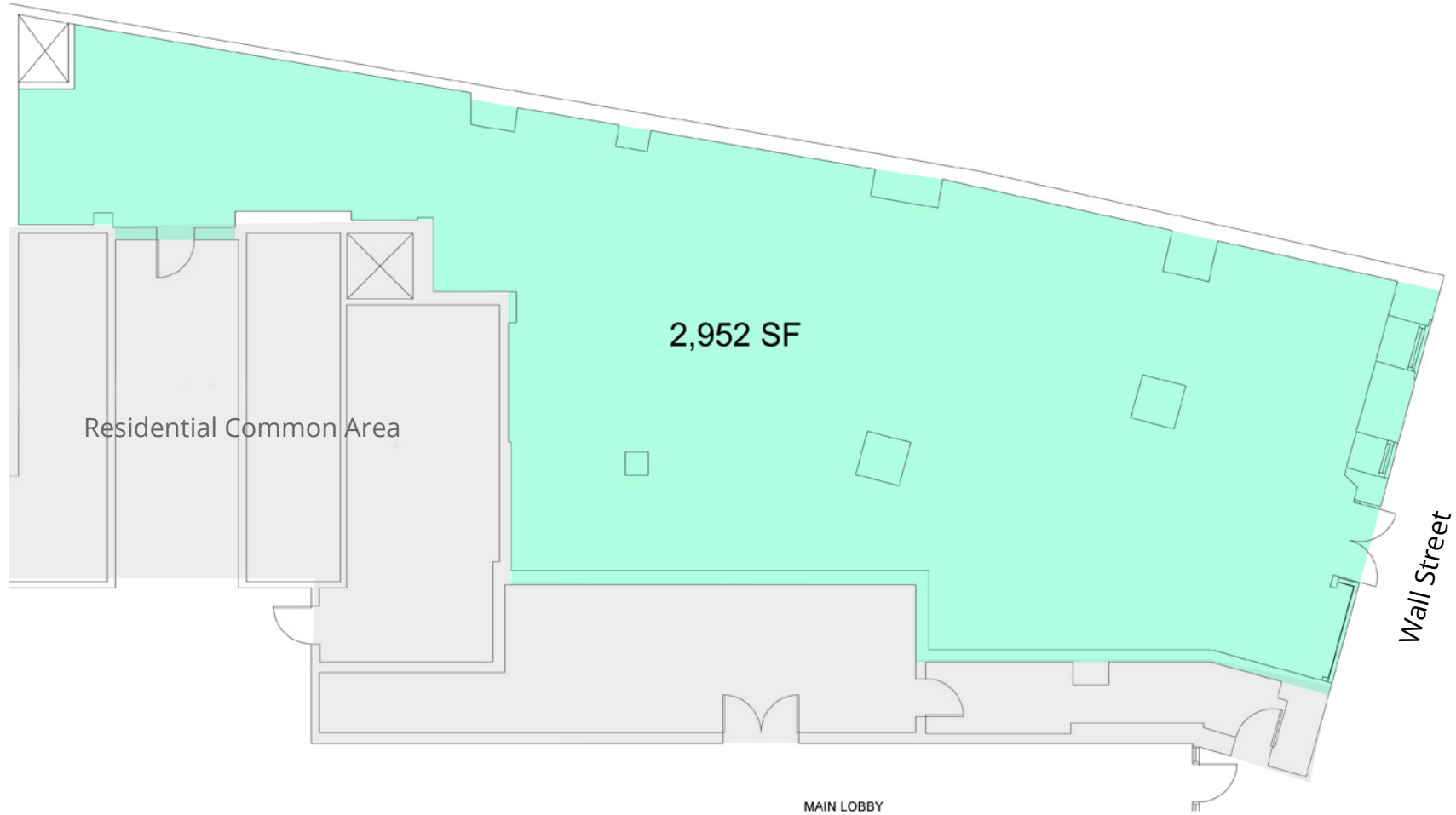
- All non-venting uses considered
- On block of two subway line entrances **2 3** and **J Z**
- Easy access to **4 5 1 R W A C E**
- 300,000 daily commuters
- 14.2 million annual tourists to the area
- 88 million SF of usable office space in Lower Manhattan



Contact

BRIAN VON SCHMID
 212.710.5259 | brian.vonschmid@srsre.com

View google map



FOR LEASE
45 Wall Street

