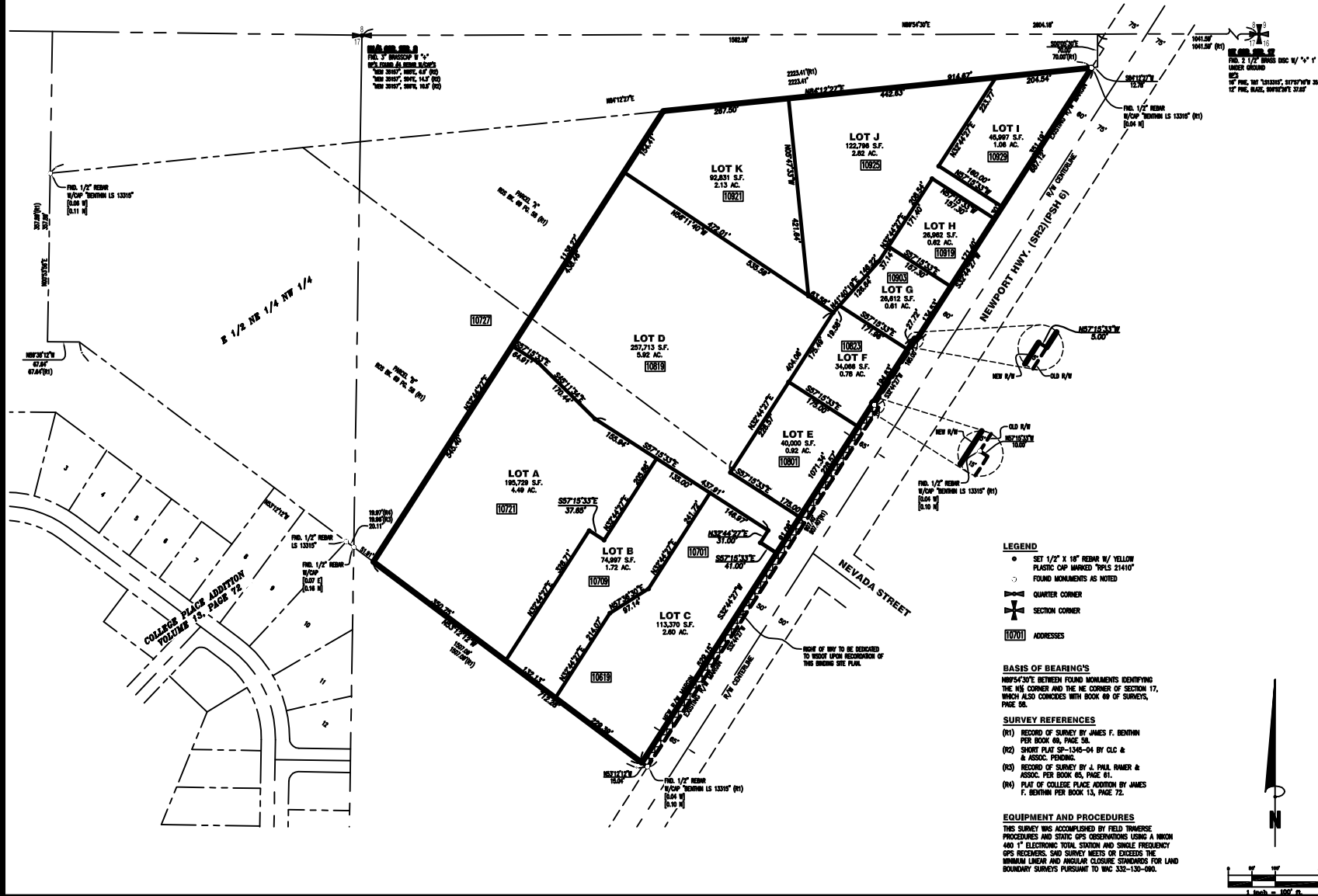


# FINAL BINDING SITE PLAN

## BSP-96-05

LOCATED IN THE NE1/4 OF SECTION 17, T26N, R43E, W.M.,  
SPOKANE COUNTY, WASHINGTON  
SHEET 1 OF 2



- LEGEND**
- SET 1/2" X 18" REBAR W/ YELLOW PLASTIC CAP MARKED "TOLIS 21410"
  - FOUND MONUMENTS AS NOTED
  - ⊕ QUARTER CORNER
  - ⊕ SECTION CORNER
  - [1000] ADDRESSES

**BASIS OF BEARINGS**  
MPPS/CUTE BETWEEN FOUND MONUMENTS IDENTIFYING THE NW CORNER AND THE NE CORNER OF SECTION 17, WHICH ALSO COINCIDES WITH BOOK 00 OF SURVEYS, PAGE 08.

- SURVEY REFERENCES**
- (01) RECORD OF SURVEY BY JAMES F. BENTHIN PER BOOK 00, PAGE 58.
  - (02) SHORT PLAT SP-1340-04 BY CLC & ASSOC. PENDING.
  - (03) RECORD OF SURVEY BY J. PAUL RAMER & ASSOC. PER BOOK 00, PAGE 61.
  - (04) PLAT OF COLLEGE PLACE ADDITION BY JAMES F. BENTHIN PER BOOK 13, PAGE 72.

**EQUIPMENT AND PROCEDURES**  
THIS SURVEY WAS ACCOMPLISHED BY FIELD TRIMMERS, PROCEDURES AND STATIC GPS OBSERVATIONS USING A MINION 480 1" ELECTRONIC TOTAL STATION AND SINGLE FREQUENCY GPS RECEIVERS. SAID SURVEY MEETS OR EXCEEDS THE MINIMUM LINEAR AND ANGULAR CLOSURE STANDARDS FOR LAND BOUNDARY SURVEYS PURSUANT TO WAC 332-130-090.



**AUDITOR'S CERTIFICATE** A.D. FILE NO. 522885  
FILED FOR RECORD THIS 7TH DAY OF JUNE 2005, AT \_\_\_\_\_ A.M., IN BOOK 2 OF BINDING SITE PLANS AT PAGE 72 & 73 AT THE REQUEST OF HAHN ENGINEERING INC.

BY \_\_\_\_\_ COUNTY AUDITOR

---

**SPOKANE COUNTY BUILDING AND PLANNING DEPARTMENT**  
EXAMINED AND APPROVED THIS \_\_\_\_\_ DAY OF \_\_\_\_\_ 2005  
DIRECTOR OF BUILDING AND PLANNING DEPARTMENT

---

**SPOKANE COUNTY DIVISION OF ENGINEERING AND ROADS**  
EXAMINED AND APPROVED THIS \_\_\_\_\_ DAY OF \_\_\_\_\_ 2005  
SPOKANE COUNTY ENGINEER

---

**SPOKANE COUNTY DIVISION OF UTILITIES**  
EXAMINED AND APPROVED THIS \_\_\_\_\_ DAY OF \_\_\_\_\_ 2005  
SPOKANE COUNTY UTILITIES

---

**SPOKANE REGIONAL HEALTH DISTRICT**  
EXAMINED AND APPROVED THIS \_\_\_\_\_ DAY OF \_\_\_\_\_ 2005  
SPOKANE REGIONAL HEALTH OFFICER


---

**SPOKANE COUNTY TREASURER**  
I, TREASURER OF SPOKANE COUNTY, WASHINGTON, DO HEREBY CERTIFY THAT ALL TAXES WHICH HAVE BEEN LEVIED AND BECOME CHARGEABLE AGAINST THE LAND SHOWN WITHIN THIS MAP AND DESCRIBED IN THE DECLARATION OF THIS DATE, HAVE BEEN FULLY PAID, SATISFIED AND DISCHARGED.  
DATED THIS \_\_\_\_\_ DAY OF \_\_\_\_\_ 2005  
SPOKANE COUNTY TREASURER

---

**SPOKANE COUNTY ASSESSOR**  
EXAMINED AND APPROVED THIS \_\_\_\_\_ DAY OF \_\_\_\_\_ 2005  
SPOKANE COUNTY ASSESSOR

---

**SURVEYORS CERTIFICATE**  
THIS MAP CORRECTLY REPRESENTS A SURVEY MADE BY ME OR UNDER MY DIRECTION IN CONFORMANCE WITH THE REQUIREMENTS OF THE SPOKANE COUNTY SUBDIVISION ORDINANCE.  
  
MICHAEL J. COKER, L.S. #21410  
June 2, 2005

---

**CLIENT INFO.**  
**PINEWATER PLAZA L.L.C.**  
608 E. HOLLAND AVE.  
SPOKANE, WA 99218  
**Hahn Engineering, Inc.**  
605 E. HOLLAND AVE. STE. 112  
SPOKANE, WA 99218  
(509) 467-1550 FAX (509) 467-8189  
survey@hahnengr.com

---

DRAWN: DJA DATE: 8/2/05 SHEET NO. 1  
APPROVED: MJC DATE: 8/2/05 2  
CAD FILE: 03-831 FBSP