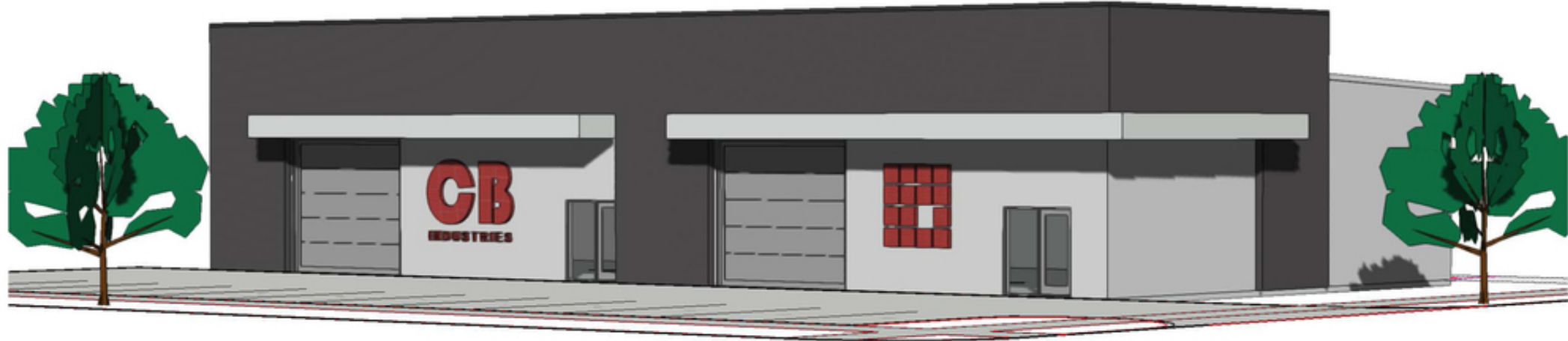


FOR LEASE

1410 E. 2nd St. Wichita, KS 67214



NAIMartens

Office/Warehouse | 5,016 SF

- 5,016 SF Office/Warehouse
- Space divisible to 2,508 SF
- Each bay will have an overhead door
- Up to 18' ceiling height
- Centrally located with easy access to I-135 and Kellogg
- Lease rate: \$9.50/SF Industrial Gross



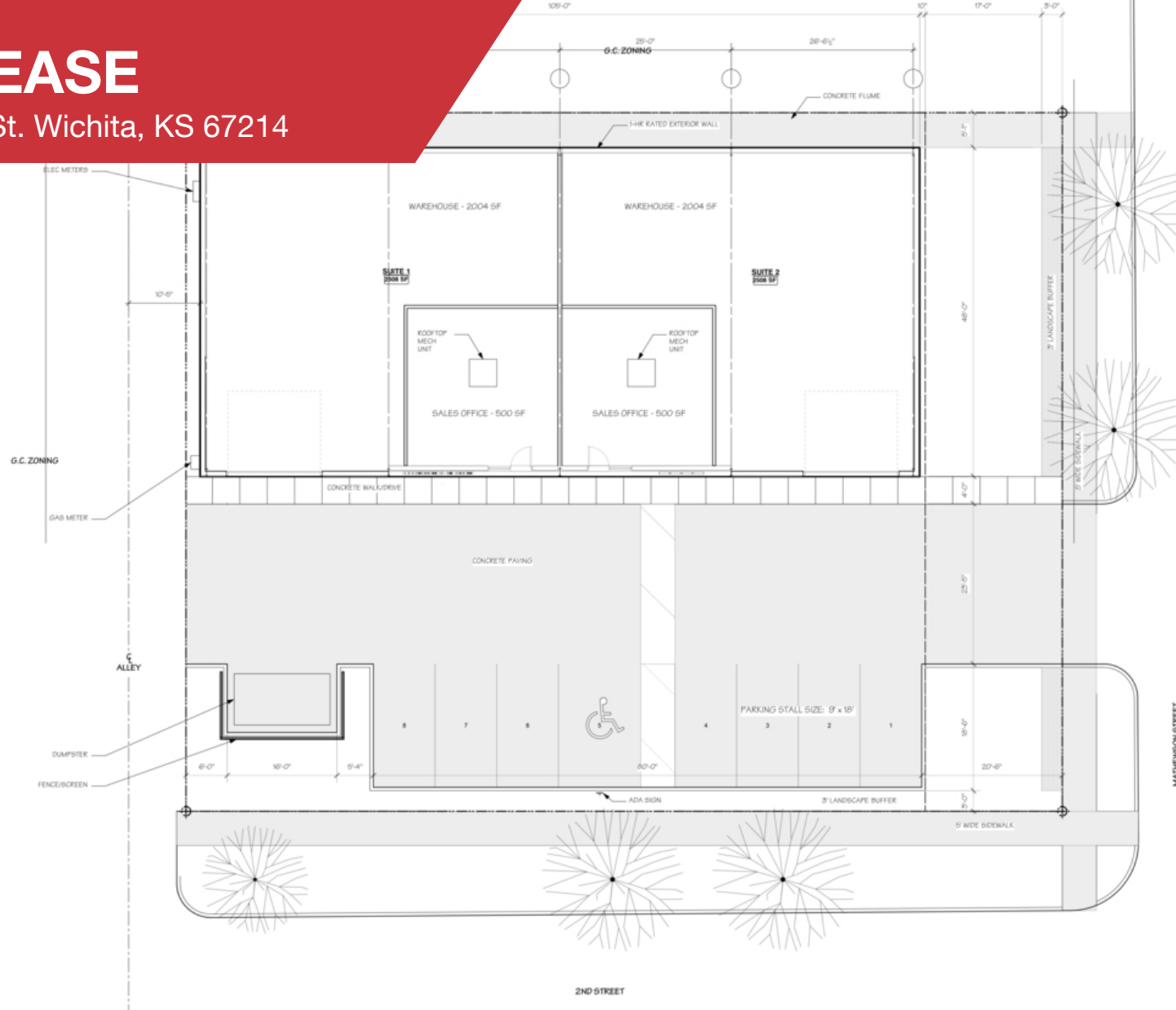
No Warranty Or Representation, Express Or Implied, Is Made As To The Accuracy Of The Information Contained Herein, And The Same Is Submitted Subject To Errors, Omissions, Change Of Price, Rental Or Other Conditions, Prior Sale, Lease Or Financing, Or Withdrawal Without Notice, And Of Any Special Listing Conditions Imposed By Our Principals No Warranties Or Representations Are Made As To The Condition Of The Property Or Any Hazards Contained Therein Are Any To Be Implied.

✉ **Grant Glasgow, SIOR**
+1 316 847 4908
gglasgow@naimartens.com

NAIMartens

FOR LEASE

1410 E. 2nd St. Wichita, KS 67214



No Warranty Or Representation, Express Or Implied, Is Made As To The Accuracy Of The Information Contained Herein, And The Same Is Submitted Subject To Errors, Omissions, Change Of Price, Rental Or Other Conditions, Prior Sale, Lease Or Financing, Or Withdrawal Without Notice, And Of Any Special Listing Conditions Imposed By Our Principals No Warranties Or Representations Are Made As To The Condition Of The Property Or Any Hazards Contained Therein Are Any To Be Implied.

✉ **Grant Glasgow, SIOR**
+1 316 847 4908
gglasgow@naimartens.com

NAIMartens