



7855 S. EMERSON AVENUE

7855 S. Emerson Avenue, Suite H, Indianapolis, IN 46237



OFFERING SUMMARY

AVAILABLE SF:	3,600 SF
LEASE RATE:	\$15.50 NNN
LOT SIZE:	0 Acres
BUILDING SIZE:	3,600
ZONING:	Z001
MARKET:	Indianapolis
SUBMARKET:	South Indianapolis

PROPERTY OVERVIEW

Terrific medical office space immediately available. This 3,600 square foot space is very nice for patient access and has great visibility and parking. The waiting room is spacious and has a very functional front office layout. The nurses station is a large open area with countertops and cabinets and has access to both hallways and exam rooms. There are 9 exam rooms, 2 restrooms and a staff breakroom. You won't find a better location for medical office space on the southside!

PROPERTY HIGHLIGHTS

- Located 1 block North of Franciscan St. Francis Health
- 3,600 Square Feet
- 9 Exam Rooms
- 2 Restrooms
- Large Nurses Station
- Functional Front Office and Checkout Areas
- Large Waiting Room

KW COMMERCIAL
11550 N. Meridian Street
Carmel, IN 46032

JULIE MERRILL
Owner - Merrill Partners
O: 317.560.9966
juliemerrill@kw.com

TERESA HARWOOD
Agent
O: 317.883.7010
tharwood@kw.com

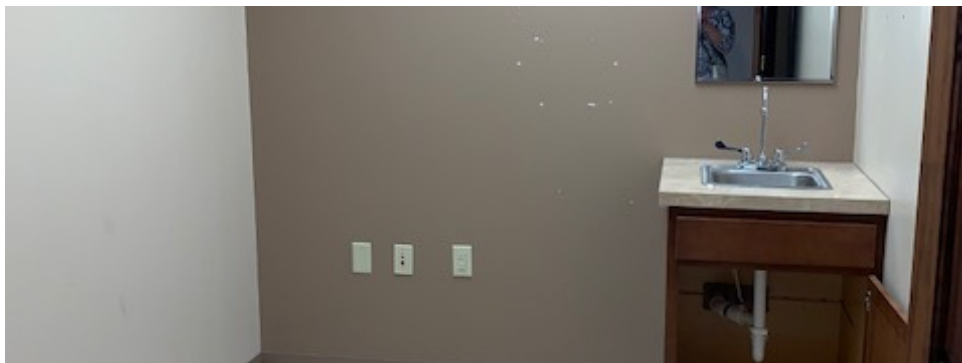
Each Office Independently Owned and Operated kwcommercial.com

We obtained the information above from sources we believe to be reliable. However, we have not verified its accuracy and make no guarantee, warranty or representation about it. It is submitted subject to the possibility of errors, omissions, change of price, rental or other conditions, prior sale, lease or financing, or withdrawal without notice. We include projections, opinions, assumptions or estimates for example only, and they may not represent current or future performance of the property. You and your tax and legal advisors should conduct your own investigation of the property and transaction.

MEDICAL OFFICE FOR LEASE

7855 S. EMERSON AVENUE

7855 S. Emerson Avenue, Suite H, Indianapolis, IN 46237



KW COMMERCIAL
11550 N. Meridian Street
Carmel, IN 46032

JULIE MERRILL
Owner - Merrill Partners
O: 317.560.9966
juliemerrill@kw.com

TERESA HARWOOD
Agent
O: 317.883.7010
tharwood@kw.com

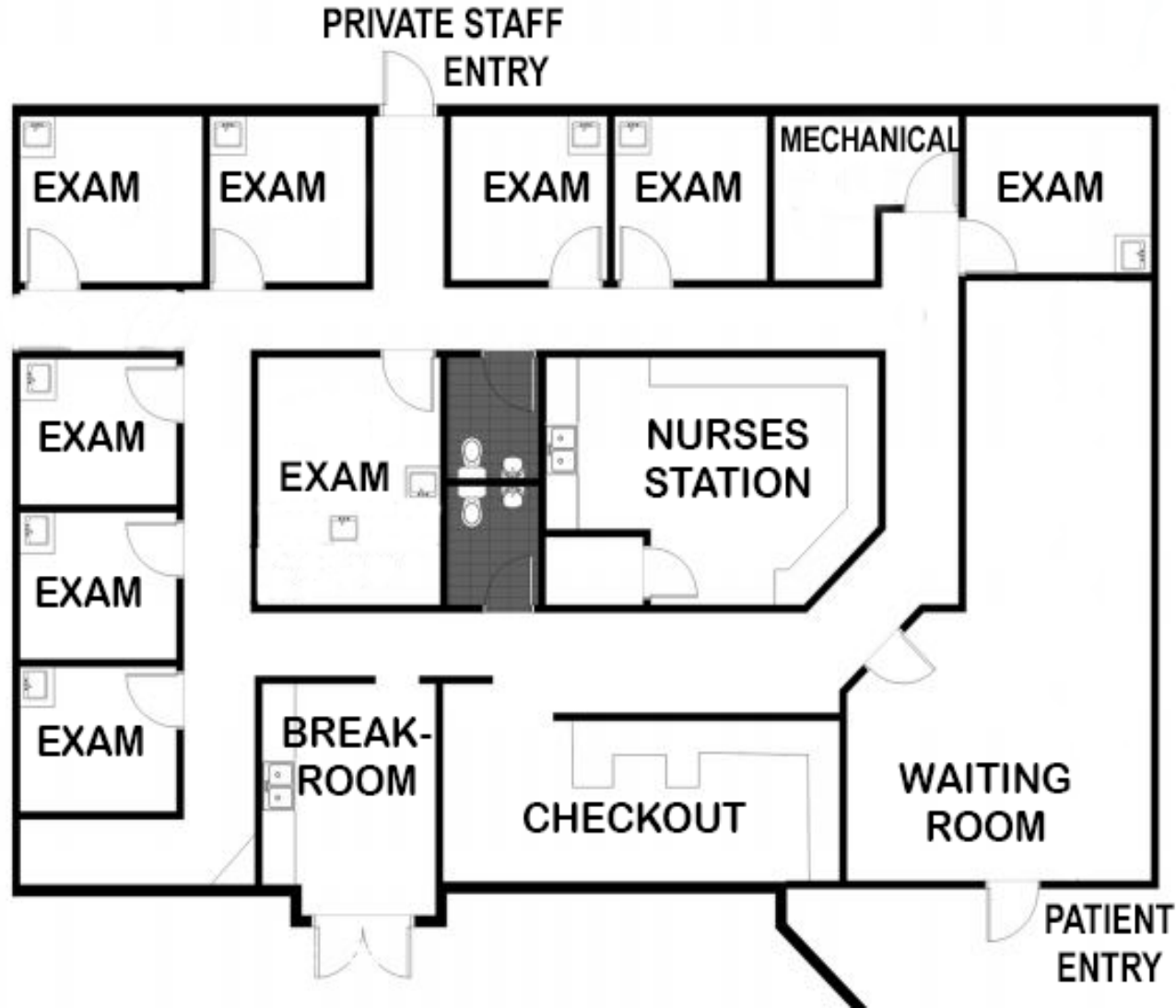
Each Office Independently Owned and Operated kwcommercial.com

We obtained the information above from sources we believe to be reliable. However, we have not verified its accuracy and make no guarantee, warranty or representation about it. It is submitted subject to the possibility of errors, omissions, change of price, rental or other conditions, prior sale, lease or financing, or withdrawal without notice. We include projections, opinions, assumptions or estimates for example only, and they may not represent current or future performance of the property. You and your tax and legal advisors should conduct your own investigation of the property and transaction.

MEDICAL OFFICE FOR LEASE

7855 S. EMERSON AVENUE

7855 S. Emerson Avenue, Suite H, Indianapolis, IN 46237



KW COMMERCIAL
11550 N. Meridian Street
Carmel, IN 46032

JULIE MERRILL
Owner - Merrill Partners
O: 317.560.9966
juliemerrill@kw.com

TERESA HARWOOD
Agent
O: 317.883.7010
tharwood@kw.com

Each Office Independently Owned and Operated kwcommercial.com

We obtained the information above from sources we believe to be reliable. However, we have not verified its accuracy and make no guarantee, warranty or representation about it. It is submitted subject to the possibility of errors, omissions, change of price, rental or other conditions, prior sale, lease or financing, or withdrawal without notice. We include projections, opinions, assumptions or estimates for example only, and they may not represent current or future performance of the property. You and your tax and legal advisors should conduct your own investigation of the property and transaction.