

## EXECUTIVE SUMMARY



### OFFERING SUMMARY

Lease Rate: \$16.00 SF/yr (NNN)

Building Size: 5,400 SF

Available SF: 1,800 SF

Year Built: 1968

Renovated: 2018

Market: NW Oklahoma City

### PROPERTY OVERVIEW

Great Visibility to one of Oklahoma City's busiest retail corridors N. May Ave.

### PROPERTY HIGHLIGHTS

- Great Visibility
- Major OKC Retail Corridor
- Pylon Sign
- Busy Intersection
- New Remodeled

**ETHAN SLAVIN**  
405.830.0252  
ethan@creekcre.com

**AJ TOLBERT**  
630.843.1989  
aj@creekcre.com

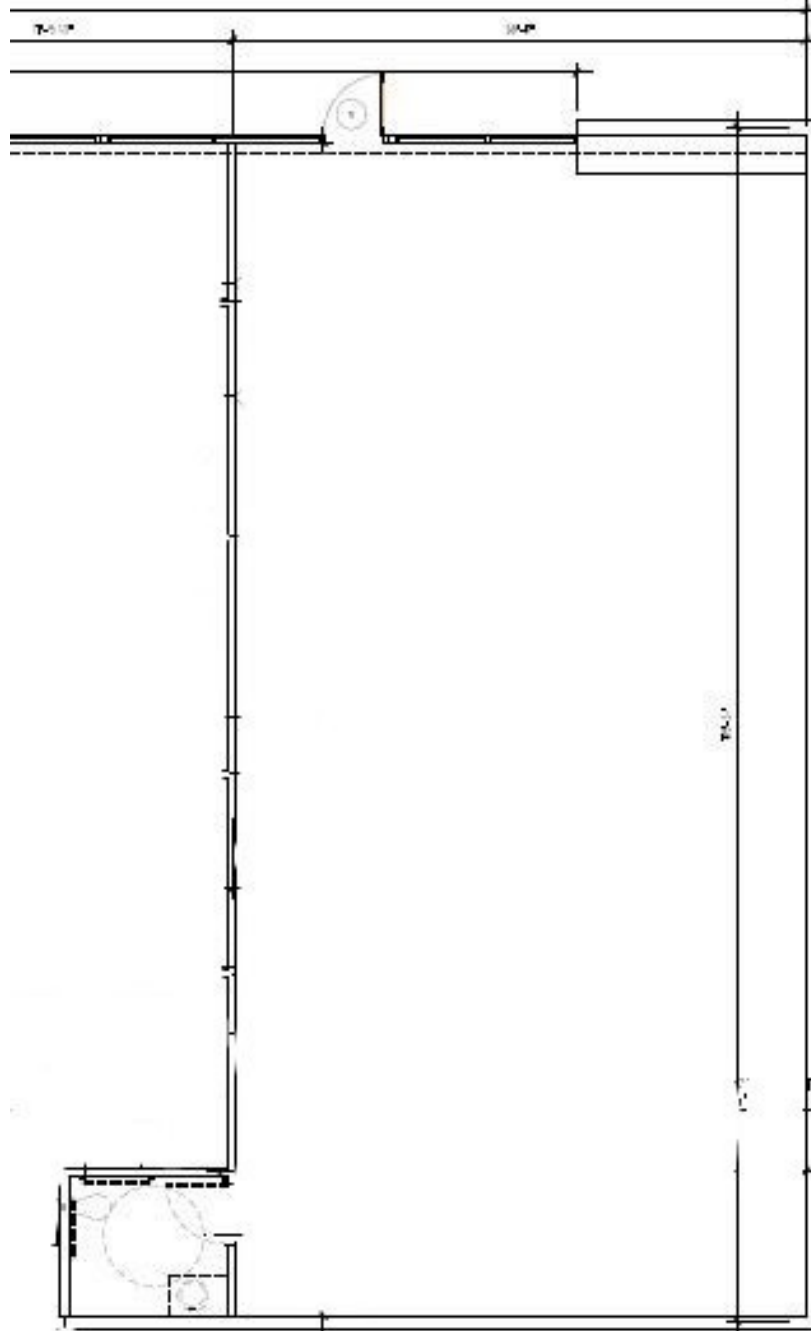
## ADDITIONAL PHOTOS



ETHAN SLAVIN  
405.830.0252  
ethan@creekcre.com

AJ TOLBERT  
630.843.1989  
aj@creekcre.com

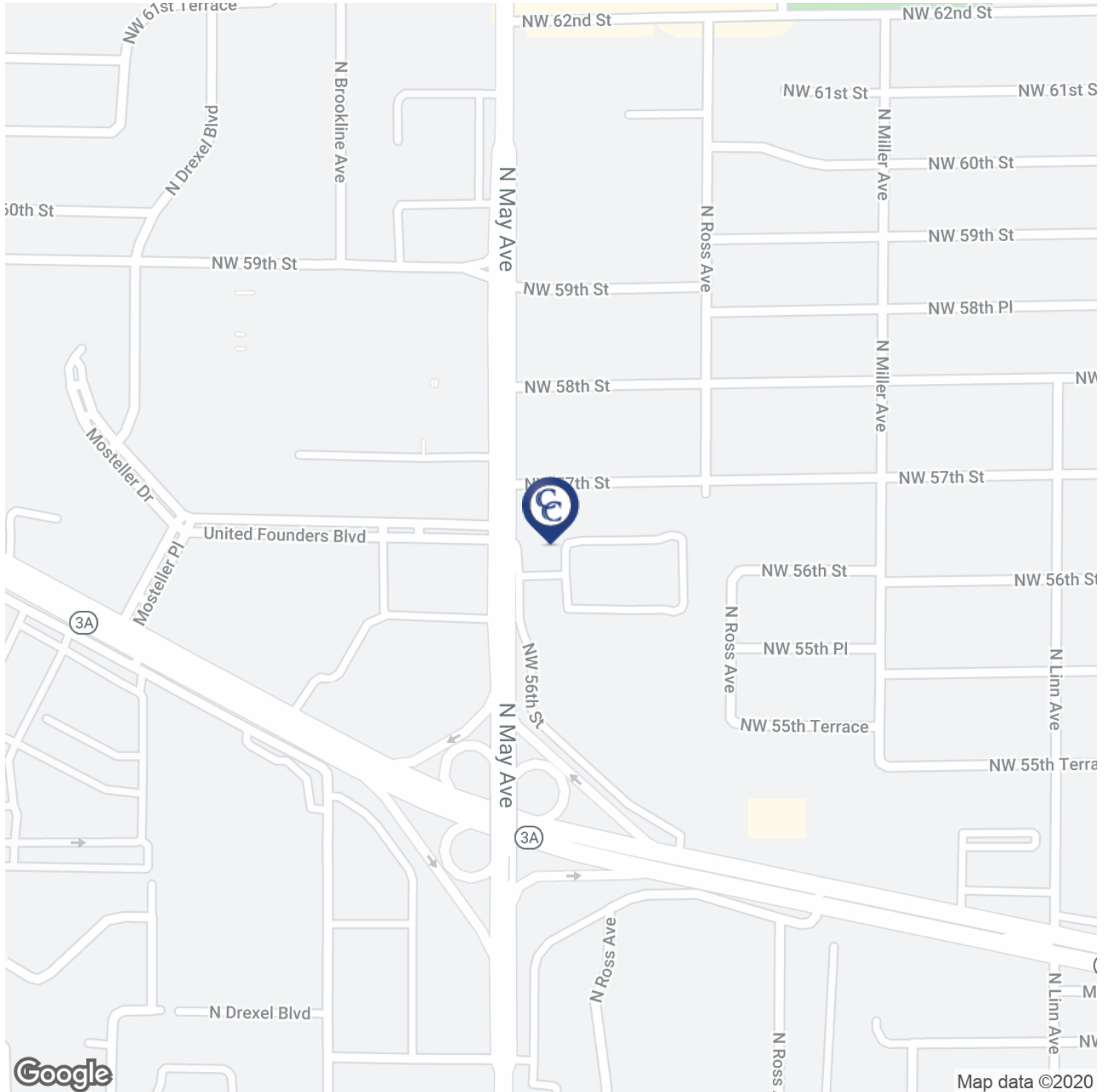
## FLOOR PLANS



ETHAN SLAVIN  
405.830.0252  
ethan@creekcre.com

AJ TOLBERT  
630.843.1989  
aj@creekcre.com

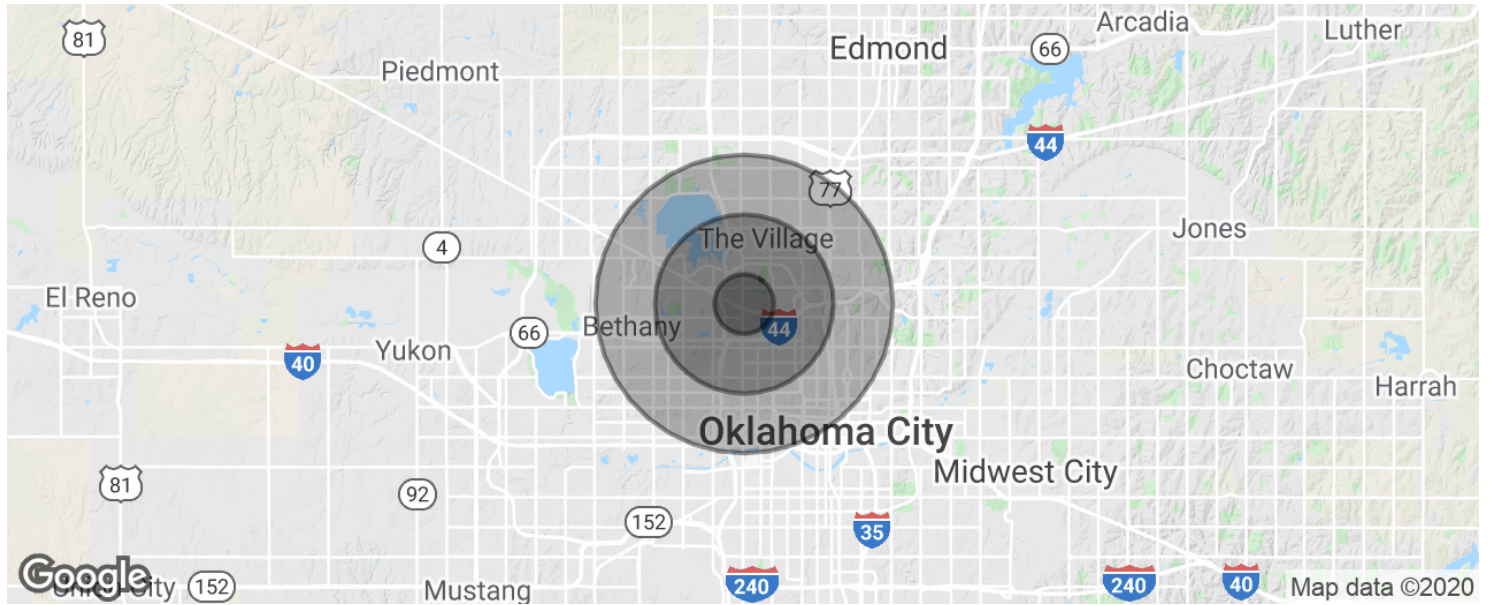
## LOCATION MAPS



**ETHAN SLAVIN**  
405.830.0252  
ethan@creekcre.com

**AJ TOLBERT**  
630.843.1989  
aj@creekcre.com

## DEMOGRAPHICS MAP & REPORT



| POPULATION          | 1 MILE    | 3 MILES   | 5 MILES   |
|---------------------|-----------|-----------|-----------|
| Total population    | 11,238    | 93,741    | 238,251   |
| Median age          | 40.4      | 37.0      | 35.4      |
| Median age (Male)   | 37.3      | 35.5      | 34.3      |
| Median age (Female) | 43.7      | 38.3      | 36.4      |
| HOUSEHOLDS & INCOME | 1 MILE    | 3 MILES   | 5 MILES   |
| Total households    | 5,815     | 42,864    | 102,684   |
| # of persons per HH | 1.9       | 2.2       | 2.3       |
| Average HH income   | \$63,257  | \$65,240  | \$57,772  |
| Average house value | \$226,623 | \$185,112 | \$162,661 |

\* Demographic data derived from 2010 US Census

**ETHAN SLAVIN**  
 405.830.0252  
 ethan@creekcre.com

**AJ TOLBERT**  
 630.843.1989  
 aj@creekcre.com