



DONALD BUILDING

OFFERING SUMMARY

Shell SF:	3,780 SF
Mezzanine SF:	936 SF
Office Sf:	780 SF
Loading:	Grade Level
Power:	3 Phase 240/480 V
Clear Height:	18' - 26'
Zoning:	C - Commercial, City of Donald

PROPERTY OVERVIEW

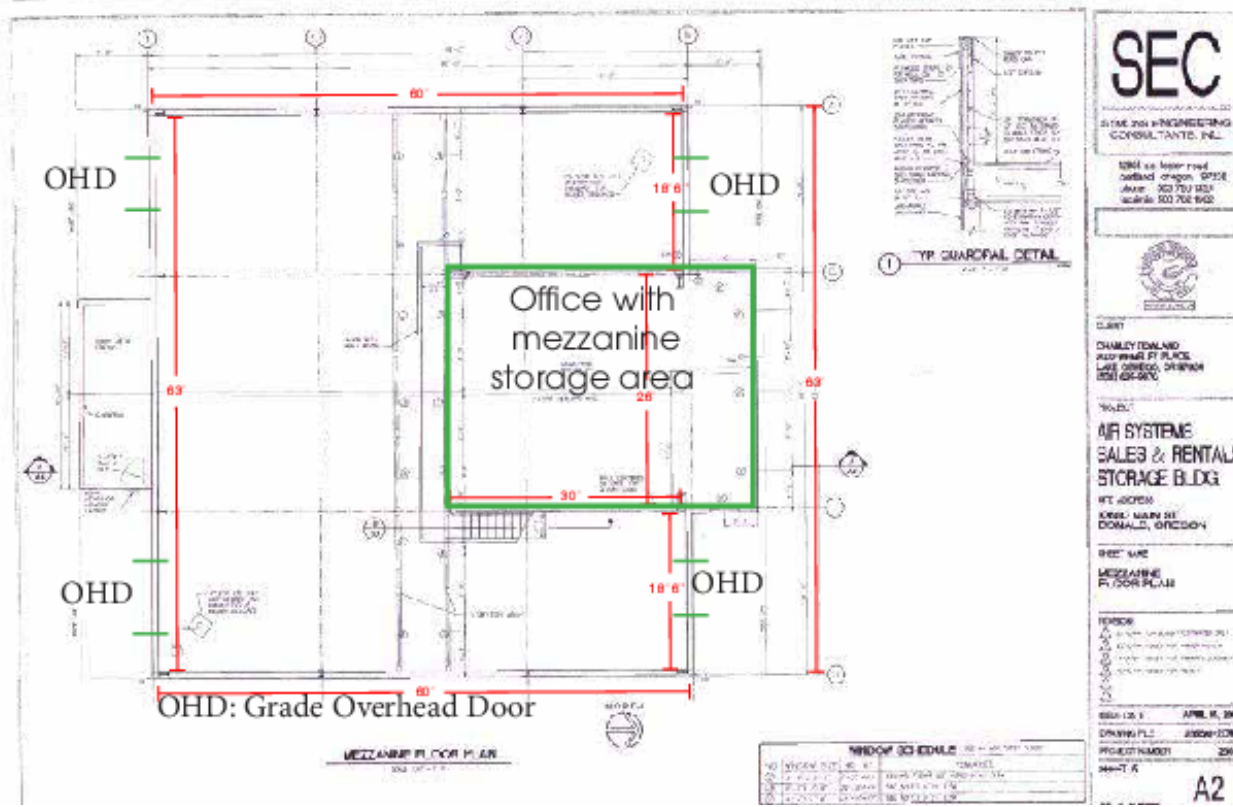
Freestanding building available offering heavy power, loading, and off-street parking. This new construction is very clean has been well-maintained.

LOCATION OVERVIEW

Located in downtown Donald on a main arterial. This property has direct freeway access and is situated 2.2 miles from the I-5 interchange.



Brett Bayne
503.972.7280
bayne@macadamforbes.com
Licensed in OR



AVAILABLE SPACES

SPACE	LEASE RATE	SIZE (SF)	OFFICE (SF)	EST. NNN's
-------	------------	-----------	-------------	------------



Brett Bayne
 503.972.7280
 bayne@macadamforbes.com
 Licensed in OR