



DONALD BUILDING

OFFERING SUMMARY

| | |
|----------------------|--------------------------------|
| Shell SF: | 3,780 SF |
| Mezzanine SF: | 936 SF |
| Office Sf: | 780 SF |
| Loading: | Grade Level |
| Power: | 3 Phase 240/480 V |
| Clear Height: | 18' - 26' |
| Zoning: | C - Commercial, City of Donald |

PROPERTY OVERVIEW

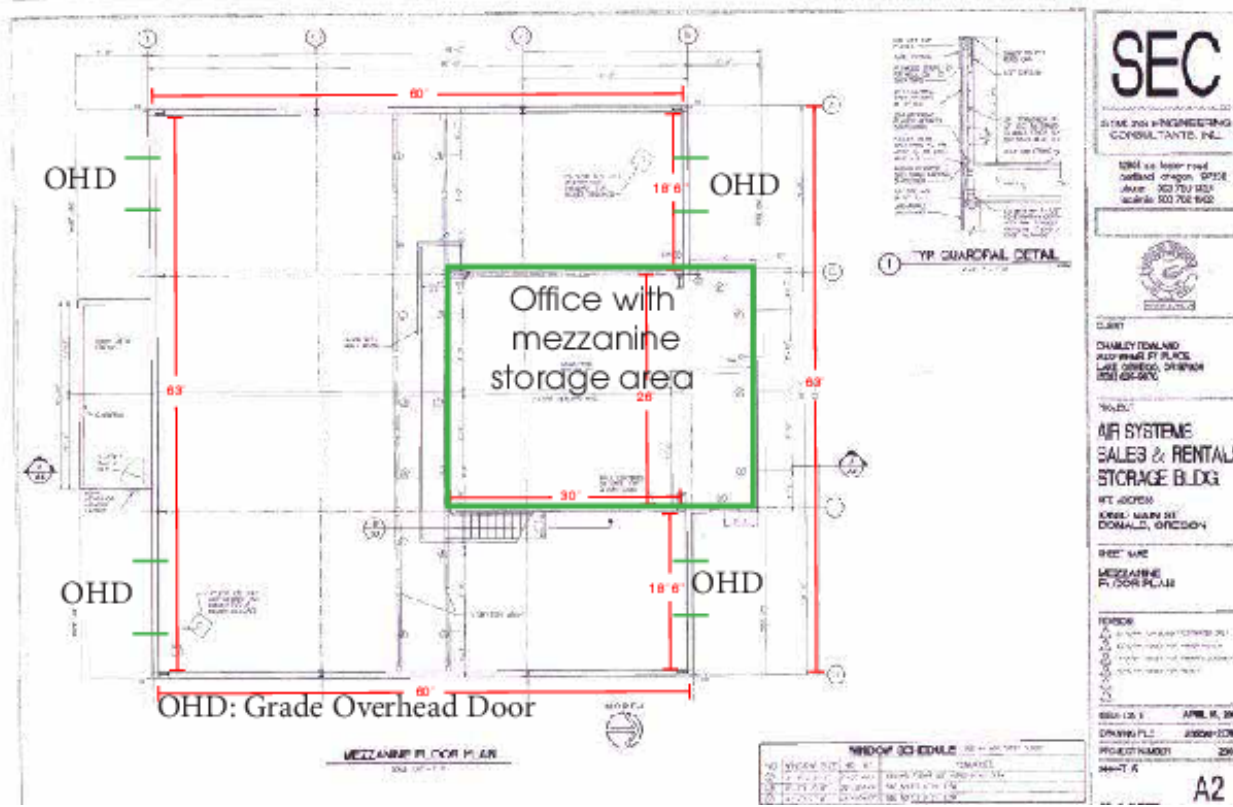
Freestanding building available offering heavy power, loading, and off-street parking. This new construction is very clean has been well-maintained.

LOCATION OVERVIEW

Located in downtown Donald on a main arterial. This property has direct freeway access and is situated 2.2 miles from the I-5 interchange.



Brett Bayne
503.972.7280
bayne@macadamforbes.com
Licensed in OR



AVAILABLE SPACES

| SPACE | LEASE RATE | SIZE (SF) | OFFICE (SF) | EST. NNN's |
|-------------------|------------|----------------|-------------|-----------------|
| 10680 Main St. NE | CALL | 3,780 SF SHELL | 780 SF | \$816 PER MONTH |



Brett Bayne
 503.972.7280
 bayne@macadamforbes.com
 Licensed in OR